



Since 1961

CATALOG 2022

Motorcycle - Bicycle - Accessories - Snow

**PLASTICHE
CASSANO**
HANDGRIPS - ITALY



MAXIME RENAUX **MX2** 2021 - 1^o Place

P
PROGRIP





ROMAIN FEBVRE **MXGP** 2021 - 2° Place

A LOVE FOR TWO WHEELS EVOLVING EVERY DAY. LET US PRODUCE THE BEST FOR YOU.



1961 - 2011 ANNIVERSARY



REGISTERED TRADE MARK

Ci sono motivi a noi peraltro sconosciuti, che spingono certi uomini a guardare un pò più in là: oltre le nuvole, oltre gli scogli, oltre i segreti. Nella loro testa, da sempre e comunque, si culla un obiettivo o un sogno che dir si voglia, e sanno perfettamente che prima o poi si avvererà o che lo centreranno, raggiungendolo.

There are reasons, that are unknow to us, that push certain people to look beyond. Beyond the clouds, beyond the cliffs, beyond their secret goals. Their objective is forever present and they know very well that they will reach this goal. Sooner or later.



IN MEMORY OF
Mr. Franchi Ferruccio
President of
PLASTICHE CASSANO
1922 - 2016



Il cliente è il vero datore di lavoro dei dipendenti della Plastiche Cassano, non il principale.

Il cliente deve essere sempre soddisfatto della qualità del prodotto e del servizio globale reso dalla Plastiche Cassano.

Tra lavorare bene e lavorare male la differenza non è molta, ma gli effetti a lungo andare possono essere molto dannosi per tutti.

1. ESPERIENZA DI **60 ANNI**
2. MATERIE PRIME DI PRIMA QUALITA' DA FORNITORI QUALIFICATI
3. CONTROLLO DI TUTTO IL PROCESSO PRODUTTIVO
4. DOPPIO CONTROLLO DEL PRODOTTO
5. GARE DI CAMPIONATO MONDIALE COME TESTS DI COLLAUDO
6. ASSICURAZIONE RESPONSABILITA' CIVILE SUI PRODOTTI



**QUALITY CONTROL ON ALL OPERATIONAL
STAGE OF PRODUCTION**

To give the customer the maximum satisfaction of service and quality, it is necessary that we all in Plastiche Cassano commit ourselves in full, with honesty and severe control during all phases of production in order to obtain the best of quality.

There is not much difference between working well or badly, but in the long term unsatisfactory results can be very damaging for us all.

1. **60 YEARS OF EXPERIENCE**
2. **TOP QUALITY RAW MATERIALS FROM HIGHLY REPUTABLE SUPPLIERS**
3. **QUALITY CONTROL IN ALL PHASES OF PRODUCTION**
4. **THOROUGH CHECK OF PRODUCTS**
5. **WORLD CHAMPIONSHIP RACES FOR PRODUCTS TESTING**
6. **INSURANCE COVER ON PRODUCTS**



Ecco come si realizza la qualità del prodotto Plastiche Cassano:

Ma i proprietari della Plastiche Cassana venivano dalla ditta del loro padre Assaggi Francesco, con sede in Cassana Magnago via Mazzini 42, fondata nel 1925 e produttrice di manopole in cuoio di butalo, poi subito dopo la seconda guerra mondiale, delle prime manopole in plastica, bachelite e acetato.

Potete vedere le foto della vecchia fabbrica come era nel 1940. Allora si producevano circa 1.000 paia di manopole al giorno, oggi ne produciamo più di 100.000 paia al giorno, con un'esportazione del 70 %.



How we obtain the high standard of quality of our products

1. Mainly we have achieved it through long experience. We started to manufacture our products in 1961, in the old factory of via Roma n.13. In the same year we became members of the Chamber of Commerce with number 84585. However the owners of Plastico Cassano originated from the family business founded by the grandfather, Mr. Francesco Assaghi. The old company was founded in 1925 and was situated in Cassano Magnago, via Mazzel, 42. It was specialized in the production of handlebar grips made with buffalo horn. Immediately after World War II, the first handlebar grips in plastic, bakelite and acetate were produced. (Please see the photographs showing the old factory in 1940). In those days the production capacity was of about 1.000 pairs of grips per day. Nowadays we produce over 100.000 pairs of grips per day. 70% of our products are exported worldwide.



La Plastica Cassano effettua il controllo di qualità sul materiale acquistato sia tramite prove interne, sia tramite laboratori imparziali che rilasciano certificati di qualità. Il materiale è così come da norme EN/71 e Reach. Lo stoccaggio delle prime, avviene in locali chiusi e non all'aperto, come fanno molti, per prevenire eventuali deterioramenti dovuti a cause atmosferiche.



2. It is vital for us to use raw materials of top quality, bought from highly reputable suppliers, with consistency of top quality. The raw materials comply with the European safety regulations, Standard EN/71 (non toxic) and Reach.

The Plastiche Cassana Company execute severe quality control over the raw material both in house, and at specialized laboratories which issue certificates of quality. Most of our competitors stock the raw materials in the open. We don't. We stock only indoors in order to prevent deterioration caused by atmospheric conditions.

PVC DIMENSIONS	1/2" (12.7mm) ID		3/4" (19.0mm) ID		1" (25.4mm) ID		1 1/2" (38.1mm) ID		2" (50.8mm) ID	
	1/2" (12.7mm) ID	3/4" (19.0mm) ID	3/4" (19.0mm) ID	1" (25.4mm) ID	1" (25.4mm) ID	1 1/2" (38.1mm) ID	1 1/2" (38.1mm) ID	2" (50.8mm) ID	2" (50.8mm) ID	
1/2" (12.7mm) ID	1.32	1.50	1.68	1.86	2.04	2.22	2.40	2.58	2.76	
3/4" (19.0mm) ID	1.50	1.68	1.86	2.04	2.22	2.40	2.58	2.76	2.94	
1" (25.4mm) ID	1.68	1.86	2.04	2.22	2.40	2.58	2.76	2.94	3.12	
1 1/2" (38.1mm) ID	1.86	2.04	2.22	2.40	2.58	2.76	2.94	3.12	3.30	
2" (50.8mm) ID	2.04	2.22	2.40	2.58	2.76	2.94	3.12	3.30	3.48	


 PVC Pipe and Fittings
 1/2" (12.7mm) ID
 3/4" (19.0mm) ID
 1" (25.4mm) ID
 1 1/2" (38.1mm) ID
 2" (50.8mm) ID

[illegible][illegible][illegible]

3. Il processo di produzione è stabilito da norme scritte ben precise a disposizione e conoscenza di tutto il personale. Dalla progettazione delle attrezzature, alla spedizione della merce prodotta, tutto è prestabilito e controllato.

4. Il controllo dei pezzi prodotti avviene due volte: la prima, durante la stessa produzione, quando ogni operatore ha il tempo necessario e l'obbligo di controllare visivamente tutti i pezzi prodotti e ogni 100 pezzi deve effettuare il controllo dimensionale ed estetico con gli appositi strumenti. Una seconda volta i pezzi vengono poi controllati prima dell'imballa dove un operatore effettua il secondo controllo dimensionale ed estetico di 3 pezzi ogni scatola, cioè circa ogni 100 / 200 pezzi secondo i modelli.

Per la spedizione si usano robusti cartoni di misura piccola o media per offrire una buona maneggevolezza ed una adeguata protezione dei pezzi durante il trasporto.



3. The production process is established by firm written rules, and circulated to all our staff. From the tool making department to the produced goods departments, everything is properly planned and controlled.

4. The quality control of the produced pieces takes place twice: the first one during the production phase, when each operator has the necessary time and the obligation of controlling every single piece produced, and every 100 pieces has to check the aesthetical and dimensional features with specialized instruments. The second quality control takes place before packing the products, when an operator performs a further control of dimensions and finishing of 3 pieces for every single carton, in total a check varying from 100 to 200 pieces according to the different model of arias.

The products are boxed in strong cartons of small or medium sizes in order to offer easy handling, and adequate protection during the transport.





5. Gare come test.

La Plastiche Cassano da ormai **30** anni sottopone i propri prodotti, sotto il marchio ProGrip, al collaudo più severo e attendibile e cioè quello delle gare dei vari campionati mondiali. Da queste esperienze vengono tratti i suggerimenti per migliorare la produzione di serie.



5. Tests during races.

For the last **30** years we have submitted our products marketed under the trade mark "Pro Grip" for race testing at events up to world championship level in three fields. From these experienced champions we gather useful informations for ever improving the quality of our mass production.

Franco PICO 1991-92 Denny LA PORTE 1991-92 Loris CAPIROSSI 2003 Simone COFSI 2008



Max NAGL 2010 Tony CAIROU 2010 Tanel LEOK 2011 Harri KULLAS 2013



Alex TONKOV 2014 Tim GAJSER 2015 Romain FEBVRE 2016 Tony CAIROU 2017/18



1943



1943



**PLASTICHE
CASSANO**
HANDGRIPS - ITALY

2021



2021



6. Dopo la spedizione tutti i prodotti Plastiche Cassano sono coperti da assicurazione responsabilità civile per un massimo di euro 2.000.000 - (\$ 2.500.000) per ogni sinistro o danno causato o per ogni persona deceduta per cause imputabili al nostro prodotto.



6. All products supplies are covered by insurance for a maximum liability of euro 2.000.000 - (\$ 2.500.000) for any possible damage, accident or death that should be attributed to our products.

The whole process is accompanied by the responsible attitude of all cooperators of the Plastiche Cassano company: from the proprietors to the last employee. This sound attitude allows us to offer a high quality product at a reasonable price and to proudly include among our customers the most important and famous companies in the world of two wheeled transport - general industry - hospital and agriculture.

60° Anniversary



2021

**PLASTICHE
CASSANO**
HANDGRIPS - ITALY





JAGO GEERTS **MX2** 2021 - 2° Place

TABLE OF CONTENTS

- TRIPLE DENSITY MX GRIPS-----	11
- DUO DENSITY MX GRIPS-----	13
- FLUO GRIPS-----	15
- SCS 708/709-----	16
- ROAD GRIPS-----	21
- SCOOTER GRIPS-----	28
- CUSTOM GRIPS-----	31
- 3200 FL-----	36
- 3200 LS-TR-----	38
- 3450 FL-----	40
- 3450 LS/TR-----	42
- 3303 FL-----	44
- 3303 TR-----	46
- 3300 FL-----	50
- 3300 TR-----	51
- 3205 MAGNET-----	54
- 3206 MAGNET-----	56
- 3201 FL DUAL-----	60
- 3201 FL-----	62
- 3201 TR -----	66
- 3204 -----	68
- 3301 -----	70
- CARBON VERSIONS-----	71
- 3101 KIDS-----	72
- GOGGLES + ROLL OFF-----	78
- ROLL OFF SYSTEM-----	80
- GREEN SYSTEM -----	82
- LENSES -----	84
- HELMETS -----	88
- ADULT RACE WERE-----	102
- KIDS RACE WERE-----	107
- MX GLOVES-----	111
- MX GLOVES KIDS-----	115
- GLOVES-----	116
- PROTECTION-----	119
- HAND GUARD-----	120
- ACCESSORIES-----	123
- BAGS-----	129
- SNOW WORLD-----	133
- AFTER RACE -----	140
- PROFESSIONAL CREAM-----	139
- BIKE RACE -----	141
- SUNGLASSES-----	143
- BABY CYCLE GRIPS-----	147
- BICYCLE GRIPS-----	149
- BMX GRIPS-----	151
- MTB GRIPS-----	152
- CITY BIKE GRIPS-----	159
- ACCESSORIES - INDUSTRY-----	160



mx GRIPS

MX GRIPS

Triple Density

MADE IN ITALY



#788-220 Colored base (**P**)
Size: \varnothing mm 22 25 - Long. mm 115
EXTRA SLIM - NO WAFFLE



#788-209 Grey base (**P**)
Size: \varnothing mm 22 25 - Long. mm 115
EXTRA SLIM - NO WAFFLE



#788-216 White base (**P**)
Size: \varnothing mm 22 25 - Long. mm 115
EXTRA SLIM - NO WAFFLE



#788-245 Special edition
Size: \varnothing mm 22 25 - Long. mm 115
EXTRA SLIM - NO WAFFLE

Available colors

PAG. 18 - 19

Hardness

HARD SH 58 Inside
SOFT SH 20-15 Outside



ECOBX
Packaging quantity:
40 x Box

The 790 grip features:
A slimmer design with a reverse waffle and the soft GEL area is present around the full diameter of the grip.



#790-240 Black base (P)
Size: Ø mm 22 25 - Long. mm 115
NO WAFFLE



#790-234 Grey base (P)
Size: Ø mm 22 25 - Long. mm 115
NO WAFFLE

Firm on the inside, Gel Density towards the palm of your hand and medium density on the ends.

In all Triple Density models, the hard density inner tube and the medium density grip ends flanges help towards maximum grip efficiency. Riders are always looking for SOFT GRIPS that don't slip on the bar. The rule in grip design is that the softer the material the more the grip will slip against the bar. Plastiche Cassano is the company that first offered duo density grips to the Motorcycle world and we try to bring new technical solutions to the market as the need arises. So we decided to design an even stronger inner sleeve to help minimize grip - MADE IN ITALY

Available colors

PAG. 18 - 19

Hardness

HARD SH 58 Inside
SOFT SH 20-15 Outside



ECOBX

Packaging quantity:
40 x Box



#791-150 Colored base
Size: Ø mm 22 25 - Long. mm 115 HALF WAFFLE



#799-201 Colored base
Size: Ø mm 22 25 - Long. mm 118 HALF WAFFLE



#801-287 Grey base
Size: Ø mm 22 25 - Long. mm 115 HALF WAFFLE



#798-125 Black base
Size: Ø mm 22 25 - Long. mm 115 HALF WAFFLE



#801-138 Black base
Size: Ø mm 22 25 - Long. mm 115 HALF WAFFLE

Harder density against the bar to keep the grip from slipping and the soft Gel density were needed.

Available colors

PAG. 18 - 19

Hardness

HARD SH 58 Inside
SOFT SH 15 Outside



ECOBX

Packaging quantity:
40 x Box

#707-102

Size: \varnothing mm 22 25 - Long. mm 115 HALF WAFFLE



#795-102

USA Design
Size: \varnothing mm 22 25 - Long. mm 115 HALF WAFFLE



#792-102

Size: \varnothing mm 22 25 - Long. mm 115 HALF WAFFLE



#803-102

Size: \varnothing mm 22 25 - Long. mm 115 HALF WAFFLE



#794-102

Size: \varnothing mm 22 25 - Long. mm 115 HALF WAFFLE



#788-300 FLUO Design

Size: \varnothing mm 22 25 - Long. mm 115 NO WAFFLE



#801-241 FLUO Design

WHITE BASE
Size: \varnothing mm 22 25 - Long. mm 115 HALF WAFFLE



#788-280 FLUO Design

SPECIAL EDITION
Size: \varnothing mm 22 25 - Long. mm 115 NO WAFFLE



#801-204 FLUO Design

COLORLED BASE
Size: \varnothing mm 22 25 - Long. mm 115 HALF WAFFLE



#791-243 FLUO Design

Size: \varnothing mm 22 25 - Long. mm 115 HALF WAFFLE



#794-166 FLUO Design

Size: \varnothing mm 22 25 - Long. mm 115 HALF WAFFLE



Available colors
PAG. 18 - 19

Hardness
MEDIUM SH 35 TOTAL



ECOBX
Packaging quantity:
40 x Box

Available colors
PAG. 18 - 19



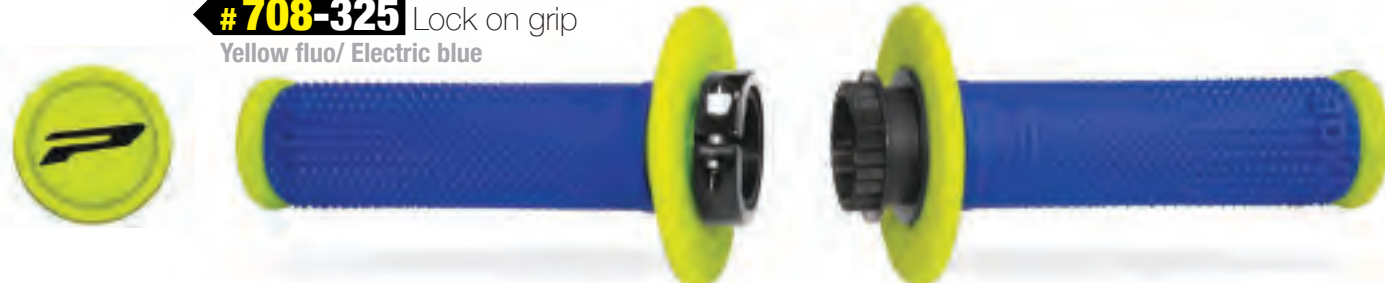
ECOBX
Packaging quantity:
40 x Box

SCS

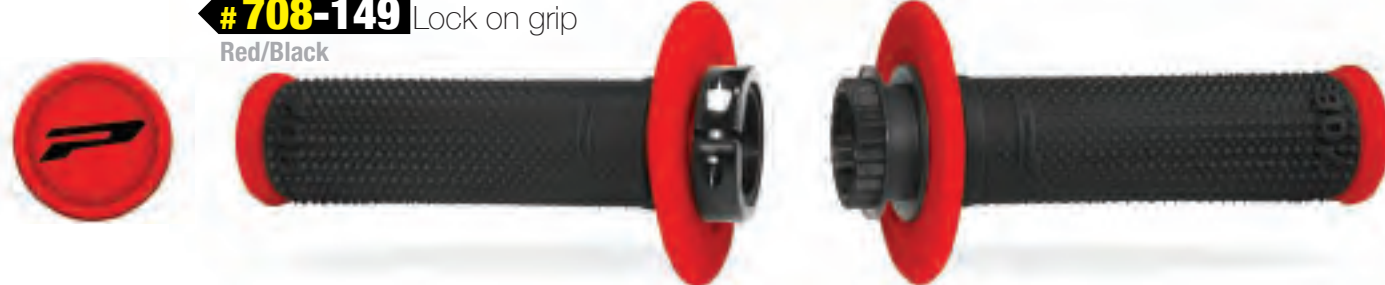
Speed control system
DUAL COLOR

Size: ø mm 22 25 - Long. mm 115
LOCK ON

#708-325 Lock on grip
Yellow fluo/ Electric blue



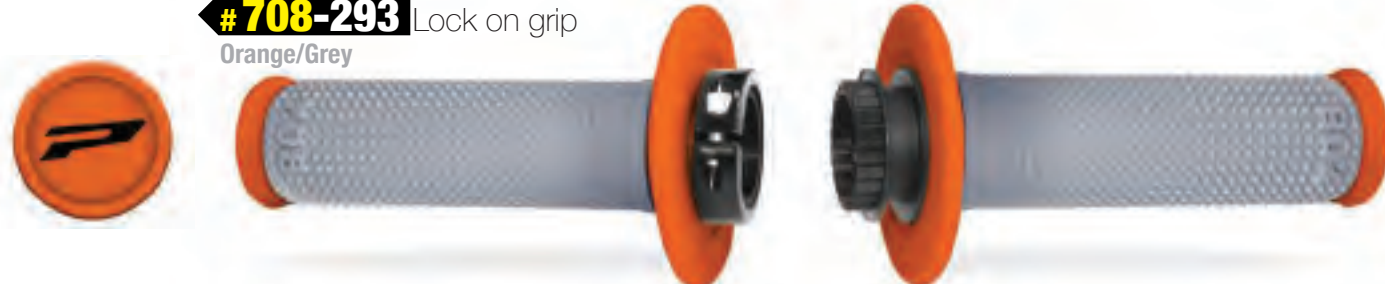
#708-149 Lock on grip
Red/Black



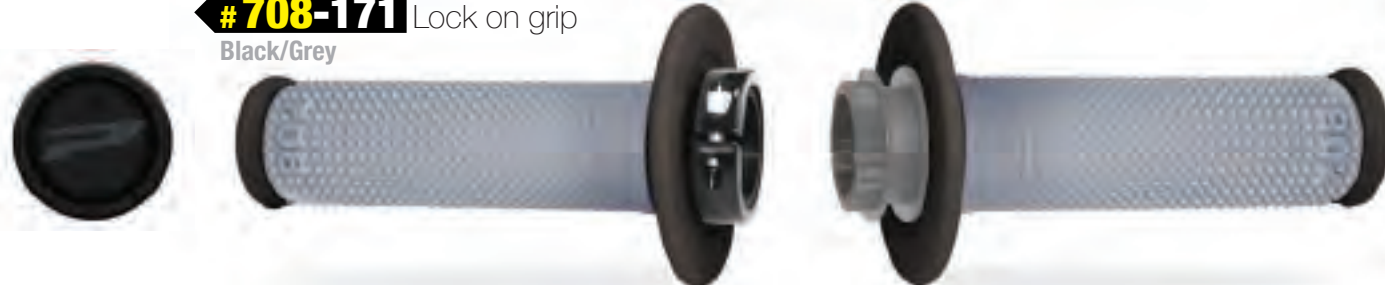
#708-150 Lock on grip
Blue/Black



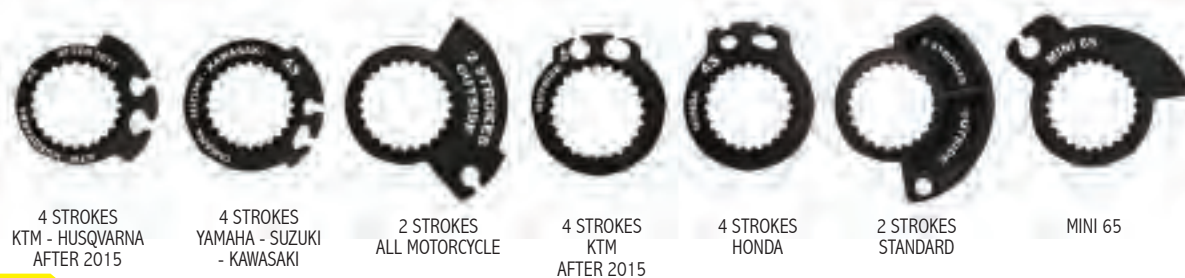
#708-293 Lock on grip
Orange/Grey



#708-171 Lock on grip
Black/Grey



Progrip Lock-On grips (includes carbon fiber compound throttle tube) Full diamond conical grip provides ultimate grip and control 7 different Throttle Cams to matching with modern motorcycles



SCS

Speed control system
SINGLE COLOR

Size: ø mm 22 25 - Long. mm 115
LOCK ON

#709-102 Lock on grip
Black



#709-107 Lock on grip
Red



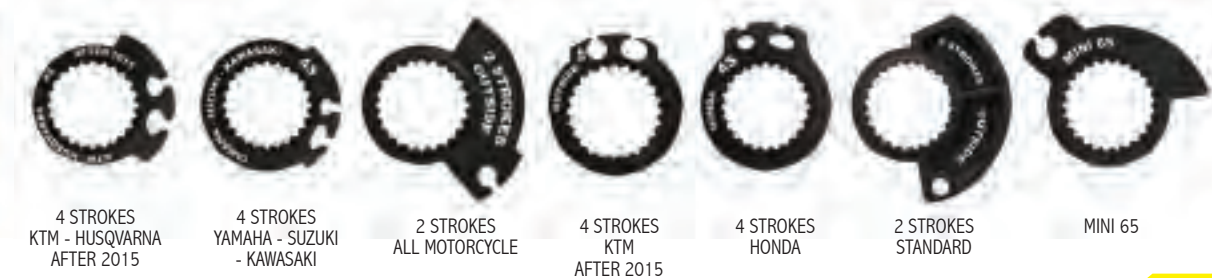
#709-104 Lock on grip
Blue



#709-108 Lock on grip
Grey



Progrip Lock-On grips (includes carbon fiber compound throttle tube) Full diamond conical grip provides ultimate grip and control 7 different Throttle Cams to matching with modern motorcycles



OFF ROAD

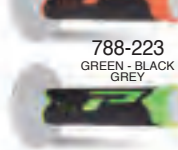
GRIPS RESUME

MADE IN ITALY

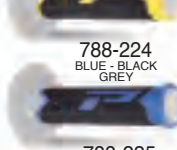
TRIPLE DENSITY COLORED BASE



788-222
ORANGE - BLACK
GREY



788-221
YELLOW - BLACK
GREY



788-225
DARK GREY - BLACK
GREY



DOUBLE DENSITY COLORED BASE



791-149
RED - BLACK



791-201
ORANGE - BLACK



791-137
WHITE - BLACK



791-187
GREY - BLACK



TRIPLE DENSITY GREY BASE



788-211
GREY - BLACK
ORANGE



788-210
GREY - BLACK
YELLOW



788-304
GREY - BLACK
FUXIA



DOUBLE DENSITY FLUO



791-241
WHITE - GREEN FLUO



791-242
WHITE - ORANGE FLUO



791-275
ORANGE FLUO - BLUE



791-296
ORANGE FLUO - BLACK



TRIPLE DENSITY WHITE BASE



788-218
WHITE - BLACK
TITANIUM



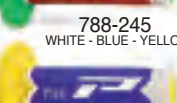
788-190
WHITE - RED - GREEN FLUO



788-285
WHITE - BLUE - LIGHT BLUE



788-245
WHITE - BLUE - YELLOW



DOUBLE DENSITY GREY BASE



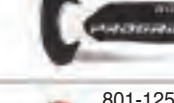
801-288
GREY - RED



801-289
GREY - YELLOW



801-137
WHITE - BLACK



801-187
GREY - BLACK



DOUBLE DENSITY BLACK BASE



801-125
BLACK - RED



801-142
BLACK - YELLOW



801-286
BLACK - LIGHT BLUE



801-171
BLACK - GREY



TRIPLE DENSITY SPECIAL EDITION FLUO



788-300
WHITE - ORANGE FLUO - BLACK



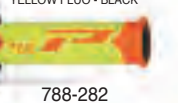
788-302
FUXIA - BLACK



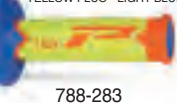
788-280
ORANGE FLUO - YELLOW FLUO - LIGHT BLUE



788-282
ORANGE FLUO - BLUE - LIGHT BLUE



788-255
YELLOW FLUO - BLACK - WHITE



DOUBLE DENSITY WHITE BASE - FLUO



801-242
WHITE - ORANGE FLUO



801-244
WHITE - YELLOW FLUO



DOUBLE DENSITY FLUO BASE



801-295
GREEN FLUO - BLACK



801-296
ORANGE FLUO - BLACK



OFF ROAD

GRIPS RESUME

MADE IN ITALY

SINGLE DENSITY



SINGLE DENSITY



SINGLE DENSITY

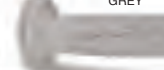


794-101
WHITE

794-107
RED



794-108
GREY



794-105
YELLOW



794-104
BLUE



SINGLE DENSITY



SINGLE DENSITY



SINGLE DENSITY FLUO



794-188
GREEN FLUO



794-114
FUXIA



DOUBLE DENSITY COLORED BASE



799-203
ORANGE - BLUE

799-294
ORANGE - RED



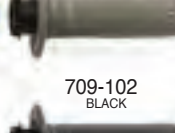
SINGLE DENSITY LOCK ON - SCS



709-104
BLUE



709-102
BLACK



DOUBLE DENSITY BLACK BASE



798-144
BLACK - ORANGE

798-142
BLACK - YELLOW



798-171
BLACK - GREY



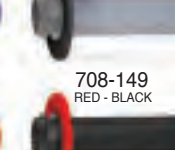
DOUBLE DENSITY LOCK ON - SCS



708-150
BLUE - BLACK



708-171
BLACK - GREY



TRIPLE DENSITY BLACK BASE



790-235
BLACK - RED
GREY

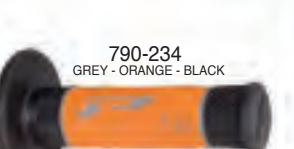
790-236
BLACK - YELLOW
GREY



790-239
BLACK - DARK GREY
GREY



TRIPLE DENSITY GREY BASE



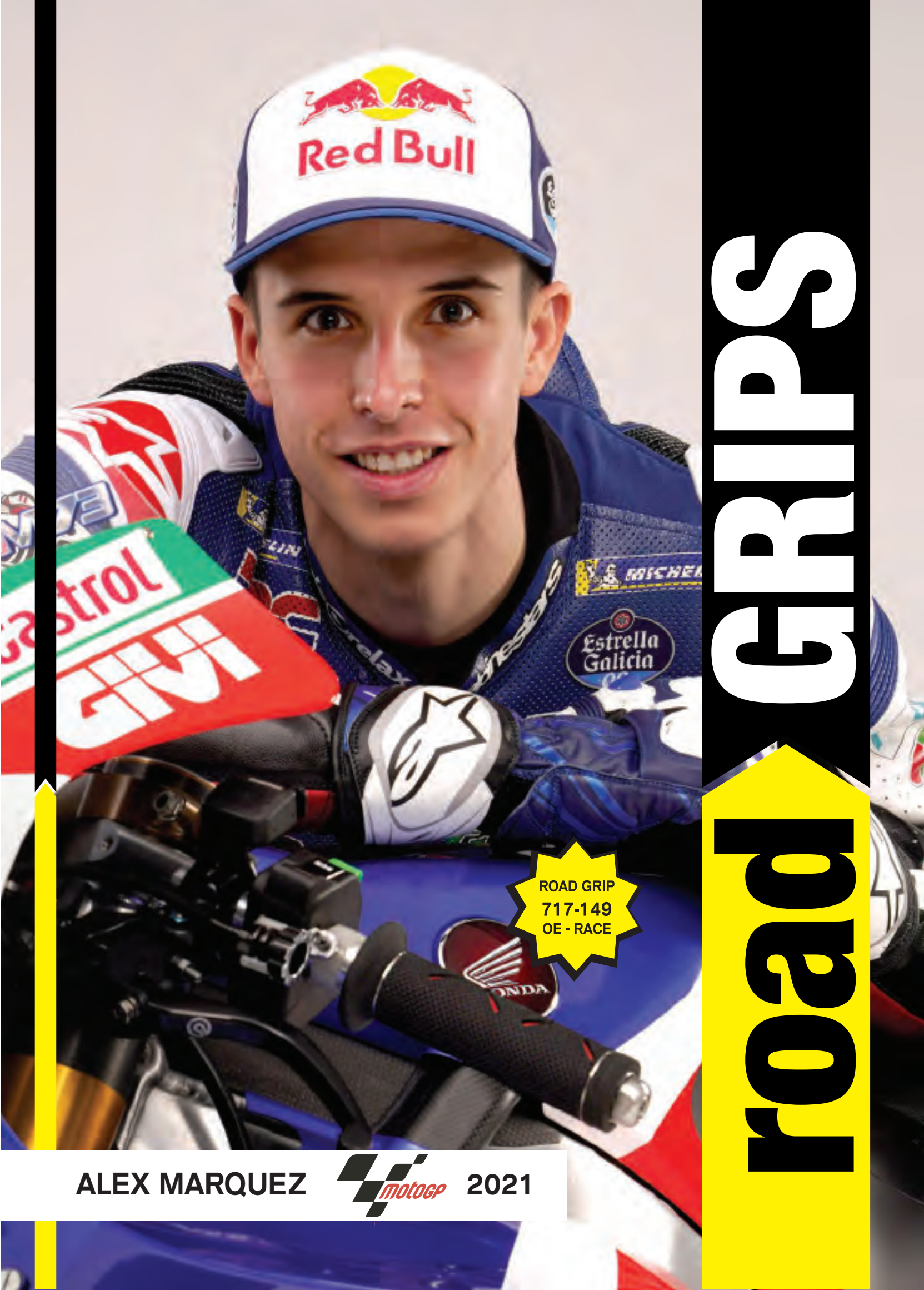
790-229
GREY - RED
BLACK

790-230
GREY - YELLOW
BLACK



790-233
GREY - TITANIUM
BLACK





ALEX MARQUEZ



2021

road GRIPS

ROAD GRIPS

Race compound

MADE IN ITALY

NEW MATERIAL FOR GP RACING - ONLY OPEN END

#717-149 OE-RA RACE

Size: Ø mm 22 25 - Long. mm 122 OPEN END



#838-149 OE-RA RACE

Size: Ø mm 22 25 - Long. mm 122 OPEN END



EXTRA SLIM

#711-102 OE-RA RACE

Size: Ø mm 22 25 - Long. mm 118 OPEN END



EXTRA SLIM - Short

#729-102 OE-RA RACE

Size: Ø mm 22 25 - Long. mm 120 OPEN END



#723-102 OE-RA RACE

Size: Ø mm 22 25 - Long. mm 125 OPEN END



#716-102 OE-RA RACE

Size: Ø mm 22 25 - Long. mm 122 OPEN END



#780-102 OE-RA RACE

Size: Ø mm 22 25 - Long. mm 125 OPEN END



#837-102 OE-RA RACE

Size: Ø mm 22 25 - Long. mm 122 OPEN END



EXTRA SLIM

Available colors

PAG. 26 - 27

Hardness

HARD SH 58 Inside
SOFT SH 30 Outside



ECOBX
Packaging quantity:
40 x Box

ROAD GRIPS

Anodized aluminium

NOT OPEN END ON DEMAND

#728-357 OE Red ring
ANODIZED ALUMINIUM
Size: \varnothing mm 22 25 - Long. mm 122 OPEN END



#728-356 Blue ring



#728-319 Silver ring



#728-359 Gold ring



#728-318 Black ring



Harder density against the bar to keep the grip from slipping and the soft Gel density were needed.



Available colors
PAG. 26 - 27

Hardness
HARD SH 58 Inside
SOFT SH 35 Outside

ROAD GRIPS

Double density

NOT OPEN END ON DEMAND

MADE IN ITALY

#717-201 OE
Size: \varnothing mm 22 25 - Long. mm 122 OPEN END



#719-125 OE
Size: \varnothing mm 22 25 - Long. mm 125 OPEN END



#721-187 OE
Size: \varnothing mm 22 25 - Long. mm 122 OPEN END



#724-198 OE
Size: \varnothing mm 22 25 - Long. mm 122 OPEN END



Available colors
PAG. 26 - 27

Hardness
HARD SH 58 Inside
SOFT SH 15 Outside

#725-201 OE
Size: \varnothing mm 22 25 - Long. mm 122 OPEN END



#732-137 OE
Size: \varnothing mm 22 25 - Long. mm 125 OPEN END



#838-149 OE
Size: \varnothing mm 22 25 - Long. mm 122 OPEN END



EXTRA SLIM

Harder density against the bar to keep the grip from slipping and the soft Gel density were needed.



ECOBX
Packaging quantity:
40 x Box

ROAD GRIPS

Single density

MADE IN ITALY

SPECIAL RUBBER - OPEN END ON DEMAND

#698-102

Size: ø mm 22 25 - Long. mm 135



#723-102

Size: ø mm 22 25 - Long. mm 125



#711-102

Size: ø mm 22 25 - Long. mm 118



EXTRA SLIM - Short

#729-102

Size: ø mm 22 25 - Long. mm 120



#713-102

Size: ø mm 22 25 - Long. mm 125



#780-102

Size: ø mm 22 25 - Long. mm 128



Available colors

PAG. 26 - 27

Hardness

HARD SH 35 TOTAL



ECOBX
Packaging quantity:
40 x Box

ROAD GRIPS

Single density

MADE IN ITALY

SPECIAL RUBBER - OPEN END ON DEMAND

#837-102

Size: ø mm 22 25 - Long. mm 122



EXTRA SLIM

#699-102

Size: ø mm 22 25 - Long. mm 125



#785-102 FOAM

Size: ø mm 22 25 - Long. mm 130



Available only in BLACK

#722-102 FOAM COVER

Size: ø mm 22 25 - Long. mm 125



Available only in BLACK

#716-102

Size: ø mm 22 25 - Long. mm 122



Available colors

PAG. 26 - 27

Hardness

HARD SH 35 TOTAL

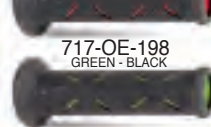
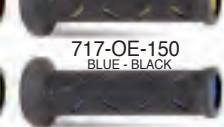
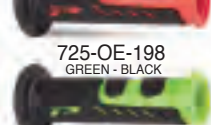
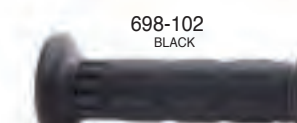
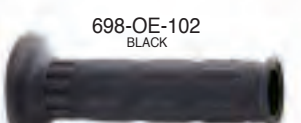
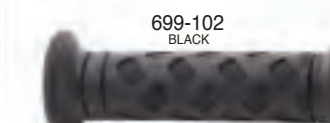
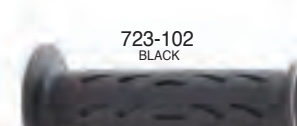
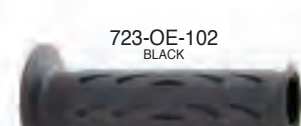
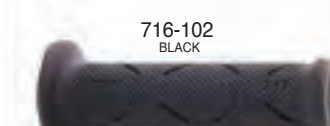


ECOBX
Packaging quantity:
40 x Box

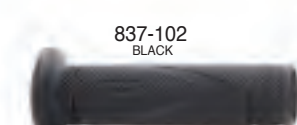
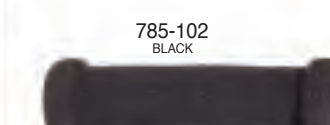
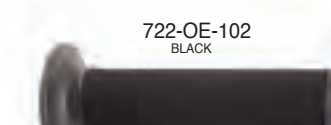
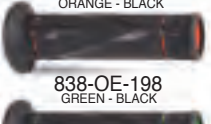
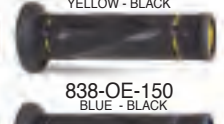
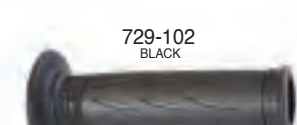
ROAD

GRIPS RESUME

MADE IN ITALY

RACE HARD COMPOUND
OPEN END838-OERA-150
BLUE - BLACK838-OERA-187
GREY - BLACKRACE HARD COMPOUND
OPEN END717-OERA-150
BLUE - BLACK717-OERA-187
GREY - BLACKRACE HARD COMPOUND
OPEN END780-OERA-102
BLACKRACE HARD COMPOUND
OPEN END837-OERA-102
BLACKRACE HARD COMPOUND
OPEN END729-OERA-102
BLACKRACE HARD COMPOUND
OPEN END711-OERA-102
BLACKGP GEL - LOGO
OPEN END717-OE-102
GP GEL BLACKDOUBLE DENSITY
OPEN END721-OE-187
GREY - BLACKDOUBLE DENSITY
OPEN END717-OE-201
ORANGE - BLACK717-OE-149
RED - BLACK717-OE-198
GREEN - BLACK717-OE-202
YELLOW - BLACK717-OE-150
BLUE - BLACK717-OE-298
BLACK - TITANIUM717-OE-187
GREY - BLACKDOUBLE DENSITY
OPEN END725-OE-201
ORANGE - BLACK725-OE-149
RED - BLACK725-OE-198
GREEN - BLACK725-OE-202
YELLOW - BLACK725-OE-150
BLUE - BLACK725-OE-298
BLACK - TITANIUM725-OE-187
GREY - BLACKDOUBLE DENSITY
OPEN END719-OE-125
BLACK - RED719-OE-144
BLACK - ORANGE719-OE-138
BLACK - GREEN719-OE-142
BLACK - YELLOW719-OE-146
BLACK - BLUE719-OE-298
BLACK - TITANIUM719-OE-171
BLACK - GREYRACE HARD COMPOUND
OPEN END723-OERA-102
BLACKRACE HARD COMPOUND
OPEN END716-OERA-102
BLACKDOUBLE DENSITY
OPEN END724-OE-149
RED - BLACK724-OE-198
GREEN - BLACK724-OE-202
YELLOW - BLACK724-OE-201
ORANGE - BLACK724-OE-150
BLUE - BLACK724-OE-298
BLACK - TITANIUM724-OE-187
GREY - BLACKSINGLE DENSITY
NOT OPEN END711-102
BLACKSINGLE DENSITY
OPEN END711-OE-102
BLACKSINGLE DENSITY
NOT OPEN END713-102
BLACKSINGLE DENSITY
OPEN END713-OE-102
BLACKSINGLE DENSITY
NOT OPEN END698-102
BLACKSINGLE DENSITY
OPEN END698-OE-102
BLACKSINGLE DENSITY
NOT OPEN END699-102
BLACKSINGLE DENSITY
OPEN END699-OE-102
BLACKSINGLE DENSITY
NOT OPEN END723-102
BLACKSINGLE DENSITY
OPEN END723-OE-102
BLACKSINGLE DENSITY
NOT OPEN END716-102
BLACKSINGLE DENSITY
NOT OPEN END

Ø 22 / 22

699-V-102
BLACKSINGLE DENSITY
NOT OPEN END837-102
BLACKSINGLE DENSITY
OPEN END837-OE-102
BLACKSINGLE DENSITY
FOAM - OPEN END785-102
BLACKSINGLE DENSITY
FOAM722-OE-102
BLACKALUMINIUM RING
OPEN END728-OE-356
BLUE RING728-OE-359
GOLD RING728-OE-318
BLACK RING728-OE-357
RED RING728-OE-319
SILVER RINGDOUBLE DENSITY
OPEN END838-OE-149
RED - BLACK838-OE-201
ORANGE - BLACK838-OE-198
GREEN - BLACK838-OE-202
YELLOW - BLACK838-OE-150
BLUE - BLACK838-OE-187
GREY - BLACKSINGLE DENSITY
NOT OPEN END729-102
BLACKSINGLE DENSITY
OPEN END729-OE-102
BLACKDOUBLE DENSITY
FLUO - OPEN END732-OE-296
ORANGE FLUO - BLACK732-OE-299
YELLOW FLUO - BLACK732-OE-297
FUXIA FLUO - BLACK732-OE-295
GREEN FLUO - BLACK

SCOOTER GRIPS

MADE IN ITALY

OPEN END ON DEMAND

#601-202

Size: Ø mm 22 25 - Long. mm 120

#732-137

Size: Ø mm 22 25 - Long. mm 125

#728-356

ANODIZED ALUMINIUM

Size: Ø mm 22 25 - Long. mm 122

#767-102

Size: Ø mm 22 25 - Long. mm 115

#789-102

Size: Ø mm 22 25 - Long. mm 115

Harder density against the bar to keep the grip from slipping and the soft Gel density were needed.

Available colors

PAG. 32 - 33

Hardness

HARD SH 58 Inside
SOFT SH 15 Outside



ECOBX
Packaging quantity:
40 x Box

ATV - JETSKI GRIPS

MADE IN ITALY

OPEN END ON DEMAND

#807-286

Size: Ø mm 22 Long. mm 125

#726-104

Size: Ø mm 22 22 Long. mm 125

#964-201 EVO

Size: Ø mm 22 22 Long. mm 120

#727-201

Size: Ø mm 22 22 Long. mm 125

#939-357 ANODIZED ALUMINIUM

Size: Ø mm 22 22 Long. mm 120

#995-357 Red ring

Size: Ø mm 22 Long. mm 130

#997-149

Size: Ø mm 22 Long. mm 130

#838-149 SA

Size: Ø mm 22 22 Long. mm 125

#808-149

Size: Ø mm 22 22 Long. mm 120

#999-319 Silver ring

Size: Ø mm 22 22 Long. mm 120

RING
Blue 356
White 317
Black 318

Red 357
White 317
Black 318

Plugs

Available colors

PAG. 32 - 33

Hardness

HARD SH 58 Inside
SOFT SH 15 Outside



ECOBX
Packaging quantity:
48 x Box

MAXI SCOOTER GRIPS

MADE IN ITALY

SOFT TOUCH - OPEN END ON DEMAND



#761-102 SOFT TOUCH
Size: Ø mm 22 25 Long. mm 125

Available colors
PAG. 34 - 35

Hardness
MEDIUM SH 35 TOTAL

CUSTOM - CRUISER GRIPS

MADE IN ITALY

RED RING 357 SILVER RING 319



#841-356 Blue ring
Size: Ø mm 22 25 - 24 28 Long. mm 140



#862-102
Size: Ø mm 22 25 - 24 28 Long. mm 140

RALLY GRIPS

MADE IN ITALY

SOFT TOUCH - OPEN END ON DEMAND



#786-102 FOAM EXTRA STRONG
Size: Ø mm 22 25 Long. mm 125



#737-102
Size: Ø mm 22 25 Long. mm 125



#714-102
Size: Ø mm 22 25 Long. mm 125

Available colors
PAG. 32 - 33

Hardness
MEDIUM SH 35 TOTAL



ECOBX
Packaging quantity:
40 x Box



#860-102 FOAM
Size: Ø mm 22 25 Long. mm 130



#842-305
Size: Ø mm 22 25 - 24 28 Long. mm 128



#862-102 CR.SK.
Size: Ø mm 22 25 - 24 28 Long. mm 140

Available colors
PAG. 32 - 33



Packaging
quantity:
20 x Box

SCOOTER - ATV - JETSKI

GRIPS RESUME

MADE IN ITALY

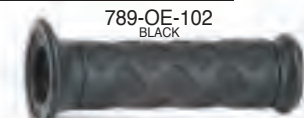
DOUBLE DENSITY
SCOOTER



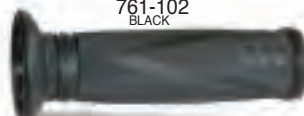
SINGLE DENSITY
SCOOTER



SINGLE DENSITY
SCOOTER - OPEN END



SINGLE DENSITY
MAXI SCOOTER



SINGLE DENSITY
MAXI SCOOTER - OPEN END



DOUBLE DENSITY
SCOOTER



ALUMINIUM RING
SCOOTER - OPEN END



DOUBLE DENSITY
SCOOTER - FLUO



DOUBLE DENSITY
ATV - JETSKI



ALUMINIUM RING
ATV - JETSKI



DOUBLE DENSITY
ATV - JETSKI LOCK ON



ALUMINIUM RING
ATV - JETSKI Ø 22 / 22



DOUBLE DENSITY
ATV - JETSKI Ø 22 / 22



SINGLE DENSITY
SCOOTER



DOUBLE DENSITY
ATV - JETSKI Ø 22 / 22



RALLY - CUSTOM

GRIPS RESUME

MADE IN ITALY

DOUBLE DENSITY
ATV - JETSKI Ø 22 / 22



DOUBLE DENSITY
ATV - JETSKI Ø 22 / 22



ALUMINIUM RING
ATV - JETSKI Ø 22 / 22



SINGLE DENSITY
ATV - JETSKI Ø 22 / 22



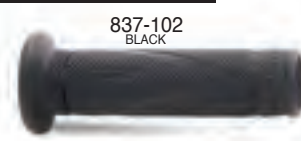
CRUISER GRIPS
CUSTOM



SINGLE DENSITY
ATV - JETSKI Ø 22 / 22



SINGLE DENSITY
TRIAL



DOUBLE DENSITY
TRIAL



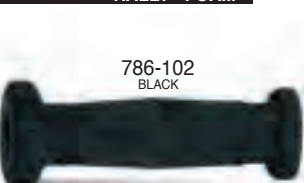
SINGLE DENSITY
RALLY



SINGLE DENSITY
RALLY



SINGLE DENSITY FOAM
RALLY - FOAM



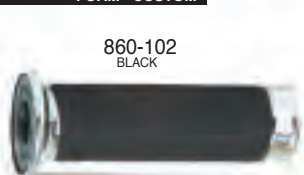
CRUISER GRIPS
ALUMINIUM RING - CUSTOM



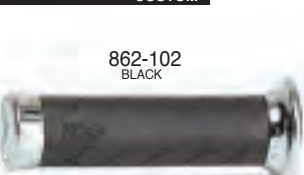
CRUISER GRIPS
CUSTOM



CRUISER GRIPS
FOAM - CUSTOM



CRUISER GRIPS
CUSTOM

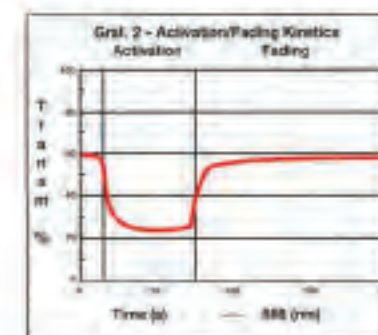
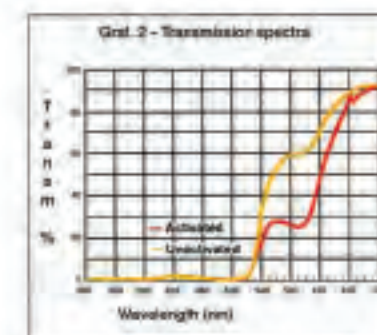
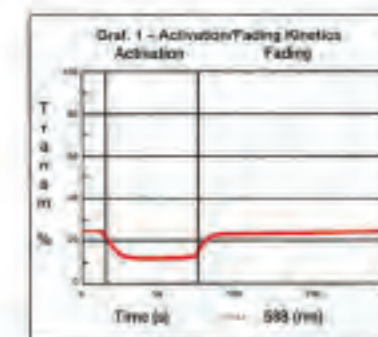
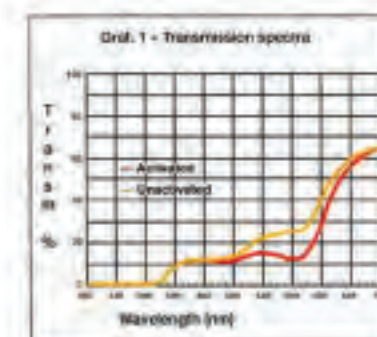




GOOGLES

mx

JAGO GEERTS **mx2** 2021 - 2° Place



Photochromatic Xelox L is a solar filter with a high speed of reaction: Activation time about 4 seconds, fading time about 4 seconds. This product is in compliance with specifications EN 186, EN 174 and EN 1836. According to EN 1836 such filters comply to point 4.1.3.1, which fixes the category for

photochromatic filters based on luminous transmittance at faded state n_0 and luminous transmittance at darkened state n_1 . For photochromatic filters the ratio between n_0 and n_1 must be $\geq 1,25$.

LENS: MULTILAYERED - MIRRORRED

#3200-373 FL

Billiard green/Gray

LENS #3249 - MULTILAYERED - MIRRORRED - ORANGE



#3200-367 FL

Orange fluo/Gray

LENS #3253

MULTILAYERED - MIRRORRED - LIGHT BLUE



Used by many of World Championship riders in MX, Enduro and other similar motorsports is a meaning of succes and prestige. The main features that puts the new 3200 on many podiums are: - Lenses: Anti UV – Anti scratch – No Fog (Progrip patented NO FOG lens technology rated the best NO FOG performance on the market) – - Built in tear off pins. - Foam: double density foam with hydro repellent and colored velvet. - Quick and easy TEAR OFFS system. - Silicone treated strap to fix the strap on helmet. - Precut foam and molded channels for eyeglasses temples. It fits in any helmet.

Totally new Blue, Red, Yellow, Orange, Green Mirrored lens, with a special process to avoid scratches.

Double density foam with hydro repellent and colored velvet.



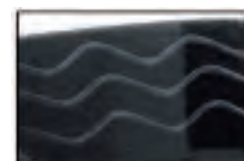
WEARABLE
ALSO WITH
EYEGLASSES

Homologation

CE-EN-N° AC-96025 REV. 3

Features

- ANTI SCRATCH
- ANTI U.V.
- NO FOG
- COLORED VELVET



3 silicone treated strap



Packaging

#3200-137 FL

White/Black

LENS #3248

MULTILAYERED - MIRRORRED - RED



#3200-130 FL

Red/White

LENS #3246

MULTILAYERED - MIRRORRED - BLUE



#3200-131 FL

Blue/White

LENS #3249

MULTILAYERED - MIRRORRED - ORANGE



#3200-368 FL

Fuxia/Green water

LENS #3247

MULTILAYERED - MIRRORRED - YELLOW



#3200-347 FL

Yellow fluo/Gray

LENS #3249

MULTILAYERED - MIRRORRED - ORANGE



#3200-198 FL

Green/Black

LENS #3253

MULTILAYERED - MIRRORRED - LIGHT BLUE



LENS: TRANSPARENT

#3200-373 LS

Biliard green/Gray
LENS #3298 - CLEAR

#3200-373 TR

Biliard green/Gray
LENS #3210 - CLEAR



#3200-367 LS

Orange fluo/Gray
LENS #3298 - CLEAR

#3200-367 TR

Orange fluo/Gray
LENS #3210 - CLEAR



#3200-137 LS

White/Black
LENS #3298 - CLEAR

#3200-137 TR

White/Black
LENS #3210 - CLEAR



#3200-130 LS

Red/White
LENS #3298 - CLEAR

#3200-130 TR

Red/White
LENS #3210 - CLEAR

#3200-131 LS

Blue/White
LENS #3298 - CLEAR

#3200-131 TR

Blue/White
LENS #3210 - CLEAR



#3200-368 LS

Fuxia/Green water
LENS #3298 - CLEAR

#3200-368 TR

Fuxia/Green water
LENS #3210 - CLEAR

#3200-347 LS

Yellow fluo/Grey
LENS #3298 - CLEAR

#3200-347 TR

Yellow fluo/Grey
LENS #3210 - CLEAR



#3200-198 LS

Green/Black
LENS #3298 - CLEAR

#3200-198 TR

Green/Black
LENS #3210 - CLEAR

Used by many of World Championship riders in MX, Enduro and other similar motorsports is a meaning of succes and prestige. The main features that puts the new 3200 on many podiums are: - Lenses: Anti UV – Anti scratch – No Fog (Progrid patented NO FOG lens technology rated the best NO FOG performance on the market) – Built in tear off pins. - Foam: double density foam with hydro repellent and colored velvet. - Quick and easy TEAR OFFS system. - Silicone treated strap to fix the strap on helmet. - Precut foam and molded channels for eyeglasses temples. It fits in any helmet.

Double density foam with hydro repellent and colored velvet.



WEARABLE
ALSO WITH
EYEGASSES

Homologation

CE-EN-N° AC-96025 REV. 3

Features

- ANTI SCRATCH
- ANTI U.V.
- NO FOG
- COLORED VELVET



3 silicone treated strap



Packaging

MX GOGGLES

3450 FL

Riot

MADE IN ITALY

LENS: MULTILAYERED - MIRRORED



#3450-264 FL Electric blue/Yellow fluo
LENS #3248 - MULTILAYERED - MIRRORED - RED



The Prorip goggles are one of the most famous masks on the market. Used by many of World Championship riders in MX, Enduro and other similar motorsports is a meaning of succes and prestige. The main features that puts the 3450 on many podiums are: - Lenses: 1 mm thickness Anti UV – Anti scratch – No Fog (Prorip patented NO FOG lens technology rated the best NO FOG performance on the market) - Quick and easy TEAR OFFS system. - Multilayered Mirrored Lens- Foam: double density foam with hydro repellent and colored velvet. - Built in tear off pins. - Silicone treated strap to fix the strap on helmet.- Precut foam and molded channels for eyeglasses temples. It fits in any helmet.

The lens position is even more inclined to increased the field vision.
Increased protection around the bridge of the nose.

Double density foam with hydro repellent and colored velvet.

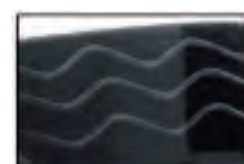


Homologation

CE-EN-N° AC-96025 REV. 3

Features

- ANTI SCRATCH
- ANTI U.V.
- NO FOG
- COLORED VELVET



3 silicone treated strap



Packaging

#3450-327 FL

Light blue/White

LENS #3253

MULTILAYERED - MIRRORED - LIGHT BLUE



#3450-338 FL

Blue/ Red

LENS #3246

MULTILAYERED - MIRRORED - BLUE



#3450-309 FL

Yellow fluo/ Blue navy

LENS #3248

MULTILAYERED - MIRRORED - RED



#3450-288 FL

Grey/ Red

LENS #3247

MULTILAYERED - MIRRORED - YELLOW



#3450-137 FL

White/ Black

LENS #3248

MULTILAYERED - MIRRORED - RED



#3450-275 FL

Orange fluo/ Blue

LENS #3247

MULTILAYERED - MIRRORED - YELLOW



MX GOGGLES

3450

Riot

MADE IN ITALY

LENS: LIGHT SENSITIVE & TRANSPARENT



#3450-264 LS Electric blue/ Yellow fluo
LENS #3298 - LIGHT SENSITIVE

#3450-264 TR Electric blue/ Yellow fluo
LENS #3210 -CLEAR



The Progrip goggles are one of the most famous masks on the market. Used by many of World Championship riders in MX, Enduro and other similar motorsports is a meaning of success and prestige. The main features that puts the 3450 on many podiums are:- Lenses: 1 mm thickness Anti UV – Anti scratch – No Fog (Progrip patented NO FOG lens technology rated the best NO FOG performance on the market) – Light sensitive (fastest light sensitive lens on the market – less than 5 seconds to clear to smoke and viceversa) – Built in tear off pins. – Quick and easy TEAR OFFS system. – Foam: double density foam with hydro repellent and colored velvet. – Silicone treated strap to fix the strap on helmet. – Precut foam and molded channels for eyeglasses temples. It fits in any helmet.

Totally new Blue, Red, Yellow, Orange, Green Mirrored lens, with a special process to avoid scratches.

Double density foam with hydro repellent and colored velvet.



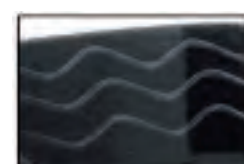
WEARABLE
ALSO WITH
EYEGASSES

Homologation

CE-EN-N° AC-96025 REV. 3

Features

- ANTI SCRATCH
- ANTI U.V.
- NO FOG
- COLORED VELVET
- LIGHT SENSITIVE



3 silicone treated strap



Packaging

#3450-327 LS
Light blue/ White
LENS #3298
LIGHT SENSITIVE

#3450-327 TR
Light blue/ White
LENS #3210 CLEAR



#3450-338 LS
Blue/ Red
LENS #3298
LIGHT SENSITIVE

#3450-338 TR
Blue/ Red
LENS #3210 CLEAR



#3450-309 LS
Yellow fluo/ Blue navy
LENS #3298
LIGHT SENSITIVE

#3450-309 TR
Yellow fluo/ Blue navy
LENS #3210 CLEAR



#3450-288 LS
Grey/ Red
LENS #3298
LIGHT SENSITIVE

#3450-288 TR
Grey/ Red
LENS #3210 CLEAR



#3450-137 LS
White/ Black
LENS #3298
LIGHT SENSITIVE

#3450-137 TR
White/ Black
LENS #3210 CLEAR



#3450-275 LS
Orange fluo/ Blue
LENS #3298
LIGHT SENSITIVE

#3450-275 TR
Orange fluo/ Blue
LENS #3210 CLEAR



MX GOGGLES

3303 FL

Vista

LENS: MULTILAYERED - MIRRORED



#3303-248 FL Turquoise/ Black
LENS #3348 - MULTILAYERED - MIRRORED - RED

Totally new Blue, Red, Yellow, Orange, Green Mirrored lens, with a special process to avoid scratches.



Double density foam with hydro repellent and colored velvet.

Used by many of World Championship riders in MX, Enduro and other similar motorsports is a meaning of succes and prestige. The main features that puts the new 3303 on many podiums are: - Lenses: Anti UV – Anti scratch – No Fog (Progrip patented NO FOG lens technology rated the best NO FOG performance on the market) - Built in tear off pins. - Foam: double density foam with hydro repellent and colored velvet. - Quick and easy TEAR OFFS system. - Silicone treated strap to fix the strap on helmet. - Precut foam and molded channels for eyeglasses temples. It fits in any helmet.

FREE
ADDITIONAL CLEAR LENS **ART. 3310**



FREE
TEAR OFF **ART. 3370**



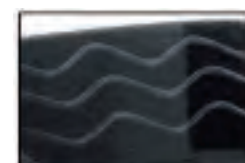
WEARABLE
ALSO WITH
EYEGASSES

Homologation

CE-EN-N° IT130358BD170713

Features

- ANTI SCRATCH
- ANTI U.V.
- NO FOG
- COLORED VELVET



3 silicone treated strap



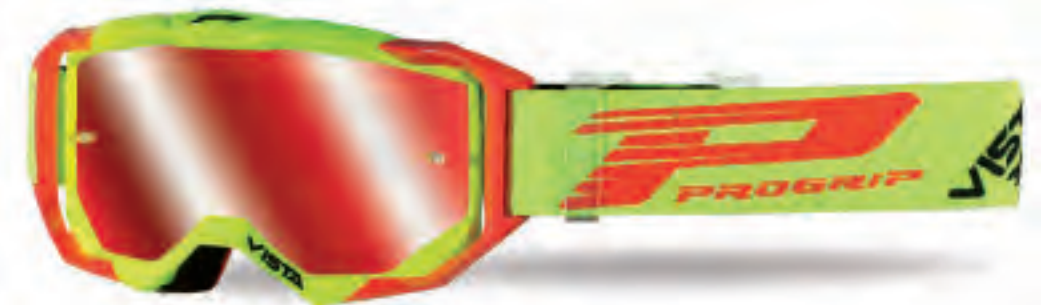
Packaging

#3303-273 FL

Yellow fluo/ Red

LENS #3348

MULTILAYERED - MIRRORED - RED



#3303-197 FL

Red/ Blue

LENS #3346

MULTILAYERED - MIRRORED - BLUE



#3303-126 FL

Black/ White

LENS #3348

MULTILAYERED - MIRRORED - RED



#3303-272 FL

Blue/ Orange

LENS #3347

MULTILAYERED - MIRRORED - YELLOW



MX GOGGLES

3303 TR

Vista

LENS: TRANSPARENT



#3303-107 TR Red
LENS #3310 - CLEAR

The lens position is even more inclined to increase the field vision. Increased protection around the bridge of the nose.



Double density foam with hydro repellent and colored velvet.

Used by many of World Championship riders in MX, Enduro and other similar motorsports is a meaning of succes and prestige. The main features that puts the new 3303 on many podiums are: - Lenses: Anti UV – Anti scratch – No Fog (Progrip patented NO FOG lens technology rated the best NO FOG performance on the market) - Built in tear off pins. - Foam: double density foam with hydro repellent and colored velvet. - Quick and easy TEAR OFFS system. - Silicone treated strap to fix the strap on helmet. - Precut foam and molded channels for eyeglasses temples. It fits in any helmet.

FREE
ADDITIONAL CLEAR LENS ART. 3310



FREE
TEAR OFF ART. 3370



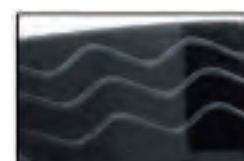
WEARABLE
ALSO WITH
EYGLASSES

Homologation

CE-EN-N° IT130358BD170713

Features

- ANTI SCRATCH
- ANTI U.V.
- NO FOG
- COLORED VELVET



3 silicone treated strap



Packaging

#3303-104 TR

Blue
LENS #3310
CLEAR



#3303-101 TR

White
LENS #3310
CLEAR



#3303-102 TR

Black
LENS #3310
CLEAR





NICHOLAS LAPUCCI **MX250^{EURO}** 2021 - 1^o Place

MULTILAYERED LENS - VISTA FRAME



#3300-126 FL

Black/White
MIRRORED - SILVER

Features

- ANTI SCRATCH
- ANTI U.V.
- NO ANTI FOG
- COLORED VELVET



#3300-127 FL

White/Red
MIRRORED - BLUE



WEARABLE
ALSO WITH
EYEGLASSES

Double density foam with hydro repellent and colored velvet.

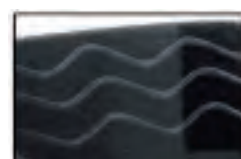
Homologation

CE-EN-N° C6658PROGRIP/RO



#3300-347 FL

YellowFL/ Grey
MIRRORED - RED



3 silicone treated strap

TRANSPARENT LENS



#3300-126 TR

Black/White
LENS #3310 - CLEAR

Features

- ANTI SCRATCH
- ANTI U.V.
- NO ANTI FOG
- COLORED VELVET



#3300-127 TR

White/Red
LENS #3310 - CLEAR



WEARABLE
ALSO WITH
EYEGLASSES

Double density foam with hydro repellent and colored velvet.

Homologation

CE-EN-N° C6658PROGRIP/RO



#3300-347 TR

YellowFL/ Grey
LENS #3310 - CLEAR



3 silicone treated strap



P
PROGRIP

MAXIME RENAUX **MX2** 2021 - 1^o Place

MIRRORED LENS - MAGNETIC LENS



#3205-181

Black Matt/ Blue

LENS #3218-104 - MIRRORED - BLUE

Double density foam with hydro repellent and colored velvet.



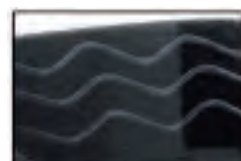
WEARABLE
ALSO WITH
EYEGLASSES

Features

- ANTI SCRATCH
- ANTI U.V.
- NO FOG
- COLORED VELVET

Homologation

CE-EN-N° C6644PROGRIP/RO



3 silicone treated strap

MIRRORED LENS - MAGNETIC LENS

#3205-185

Black Matt/ Red

LENS #3217-107 - MIRRORED - RED



#3205-178

Black Matt/ Silver

LENS #3216-120 - MIRRORED - SILVER



#3205-184

Black Matt/ Yellow

LENS #3219-105 - MIRRORED - YELLOW



MIRRORED LENS - MAGNETIC LENS

#3206-102

Black

LENS #3216-120 - MIRRORED - SILVER



Double density foam with hydro repellent and colored velvet.



WEARABLE
ALSO WITH
EYEGLASSES

Features

- ANTI SCRATCH
- ANTI U.V.
- NO FOG
- COLORED VELVET



3 silicone treated strap

#3206-104

Blue

LENS #3218-104 - MIRRORED - BLUE



#3206-107

Red

LENS #3217-107 - MIRRORED - RED



#3206-164

Yellow fluo

LENS #3219-105 - MIRRORED - YELLOW



REPLACEMENT MAGNET LENSES

Magnet - Advance

NEW

FITS ADULT GOGGLE SERIES N° 3205/3206

#3216-120
Mirrored
Silver



#3217-107
Mirrored
Red



#3218-104
Mirrored
Blue



#3219-105
Mirrored
Yellow



#3226
Clear lens



#3227
Clear lens
Roll Off



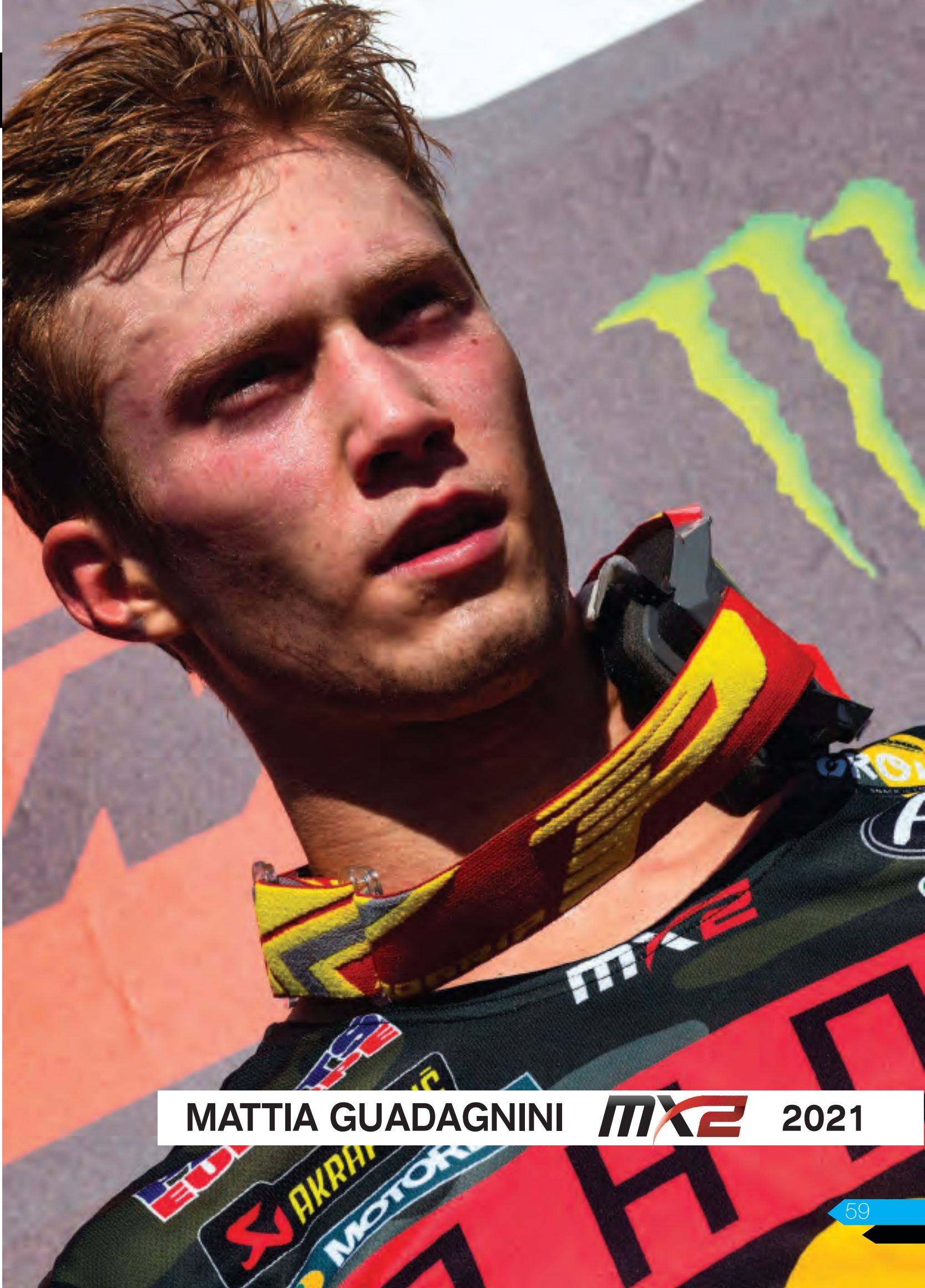
#3278
10 Tear off



#3279
25 Tear off



#3228
Lens 3227 +
Roll off 3368



MATTIA GUADAGNINI



2021

MX GOGGLES 3201 FL Dual color Atzaki



#3201-366 FL

Black/Orange Fluo

LENS #3246/C - MULTILAYERED - MIRRORRED - BLUE



#3201-194 FL

Black/Yellow Fluo

LENS #3248/C - MULTILAYERED - MIRRORRED - RED



#3201-137 FL

White/Black

LENS #3248/C - MULTILAYERED - MIRRORRED - RED



#3201-130 FL

Red/White

LENS #3246/C - MULTILAYERED - MIRRORRED - BLUE

Single density foam with hydro repellent and colored velvet.



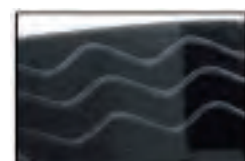
WEARABLE
ALSO WITH
EYEGASSES

Homologation

CE-EN-N° AC-12072 REV.1

Features

- ANTI SCRATCH
- ANTI U.V.
- NO ANTI FOG
- COLORED VELVET



3 silicone treated strap



Packaging



KIARA FONTANESI



2021 - 3° Place

LENS: MULTILAYERED - MIRRORED



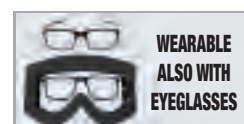
#3201-107 FL Red
LENS #3247/C - MULTILAYERED - MIRRORED - YELLOW



The Progrip goggles are one of the most famous masks on the market. Used by many of World Championship riders in MX, Enduro and other similar motorsports is a meaning of succes and prestige. The main features that puts the 3201 on many podiums are:

- Lenses: Anti UV – Anti scratch – No AntiFog
- Built in tear off pins.
- Foam: single density foam with hydro repellent and colored velvet.
- Quick and easy TEAR OFFS system.
- Silicone treated strap to fix the strap on helmet.
- Precut foam and molded channels for eyeglasses temples.

Single density foam with hydro repellent and colored velvet.



WEARABLE
ALSO WITH
EYEGASSES

Homologation
CE-EN-N° AC-12072-REV.1

Features

- ANTI SCRATCH
- ANTI U.V.
- NO ANTI FOG
- COLORED VELVET



3 silicone treated strap



Packaging

#3201-104 FL
Blue
LENS #3247/C
MULTILAYERED - MIRRORED - YELLOW



#3201-101 FL
White
LENS #3253/C
MULTILAYERED - MIRRORED - LIGHT BLUE



#3201-166 FL
Orange fluo
LENS #3246/C
MULTILAYERED - MIRRORED - BLUE



#3201-164 FL
Yellow fluo
LENS #3248/C
MULTILAYERED - MIRRORED - RED



#3201-102 FL
Black
LENS #3252/C
MULTILAYERED - MIRRORED - SILVER





MAXIMILIAN SPIES **MX2T**^{EURO} 2021 - 1^o Place

LENS: TRANSPARENT



#3201-164
Yellow Fluo
LENS #3213
CLEAR



The Progrip goggles are one of the most famous masks on the market. Used by many of World Championship riders in MX, Enduro and other similar motorsports is a meaning of succes and prestige. The main features that puts the 3201 on many podiums are: - Lenses: Anti UV – Anti scratch – No AntiFog - Built in tear off pins. - Foam: single density foam with hydro repellent and colored velvet. - Quick and easy TEAR OFFS system. - Silicone treated strap to fix the strap on helmet. - Precut foam and molded channels for eyeglasses temples.

Single density foam with hydro repellent and colored velvet.



WEARABLE
ALSO WITH
EYEGASSES

Homologation

CE-EN-N° AC-12072 REV.1

Features

- ANTI SCRATCH
- ANTI U.V.
- NO ANTI FOG
- COLORED VELVET



3 silicone treated strap



Packaging

#3201-104

Blue
LENS #3213
CLEAR



#3201-102

Black
LENS #3213
CLEAR



#3201-107

Red
LENS #3213
CLEAR



#3201-103

Green
LENS #3213
CLEAR



#3201-166

Orange Fluo
LENS #3213
CLEAR



#3201-101

White
LENS #3213
CLEAR



#3201-120

Silver
LENS #3213
CLEAR



MX GOGGLES

3204

Dark side - MATT FRAME

LENS: MULTILAYERED - MIRRORED



#3204-181 Black matt/Blue
LENS #3246 - MULTILAYERED - MIRRORED - BLUE



The Progrip goggles are one of the most famous masks on the market. Used by many of World Championship riders in MX, Enduro and other similar motorsports is a meaning of succes and prestige. The main features that puts the 3204 on many podiums are: - Lenses: Anti UV – Anti scratch – No Fog - Built in tear off pins. - Foam: single density foam with hydro repellent and colored velvet. - Quick and easy TEAR OFFS system. - Silicone treated strap to fix the strap on helmet. - Precut foam and molded channels for eyeglasses temples.

Double density foam with hydro repellent and colored velvet.



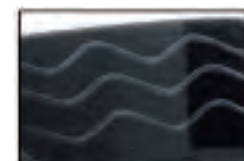
WEARABLE
ALSO WITH
EYEGASSES

Homologation

CE-EN-N° AC-14063-REV.1

Features

- ANTI SCRATCH
- ANTI U.V.
- NO FOG
- COLORED VELVET



3 silicone treated strap



Packaging

#3204-183

Black matt/Green

LENS #3251

MULTILAYERED - MIRRORED - GREEN



#3204-184

Black matt/Yellow

LENS #3247

MULTILAYERED - MIRRORED - YELLOW



#3204-185

Black matt/Red

LENS #3248

MULTILAYERED - MIRRORED - RED



#3204-186

Black matt/Orange

LENS #3249

MULTILAYERED - MIRRORED - ORANGE



#3204-178

Black matt/Silver

LENS #3252

MULTILAYERED - MIRRORED - SILVER



MX GOGGLES

3301

Naswa

LENS: TRANSPARENT



#3301-102 Black
LENS #3210 - CLEAR



#3301-101 White
LENS #3210 - CLEAR



The Prorip goggles are one of the most famous masks on the market. Used by many of World Championship riders in MX, Enduro and other similar motorsports is a meaning of succes and prestige. The main features that puts the 3204 on many podiums are: - Lenses: Anti UV – Anti scratch – No Fog - Built in tear off pins. - Foam: single density foam with hydro repellent and colored velvet. - Quick and easy TEAR OFFS system. - Silicone treated strap to fix the strap on helmet. - Precut foam and molded channels for eyeglasses temples.

Single density foam with hydro repellent velvet.



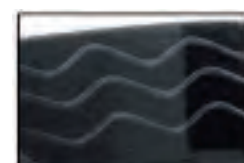
WEARABLE
ALSO WITH
EYEGASSES

Homologation

CE-EN-N° AC-10170-REV.1

Features

- ANTI SCRATCH
- ANTI U.V.
- NO FOG



3 silicone treated strap



Packaging

CARBON VERSION

3200

MADE IN ITALY

#3200-189 LS

Venom Carbon

LENS #3298
LIGHT SENSITIVE



WEARABLE
ALSO WITH
EYEGASSES



CARBON VERSION

3450

MADE IN ITALY

#3450-189 LS

Riot Carbon

LENS #3298
LIGHT SENSITIVE



WEARABLE
ALSO WITH
EYEGASSES



LENS: TRANSPARENT



#3101-107 Red
LENS #3111 - CLEAR



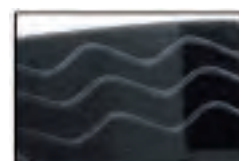
This is the 3101 PROGRIP kids goggle: the new ergonomically design follow the little guys face form with maximum comfortability. With single density foam, one silicone treated strap, anti UV and 1millimeters double side NO-FOG lens.

Single density foam with hydro repellent velvet.



Features

- ANTI SCRATCH
- ANTI U.V.
- NO FOG



3 silicone treated strap



Packaging

#3101-101
White
LENS #3111
CLEAR



#3101-106
Orange
LENS #3111
CLEAR



#3101-104
Blue
LENS #3111
CLEAR



#3101-105
Yellow
LENS #3111
CLEAR



#3101-103
Green
LENS #3111
CLEAR



#3101-102
Black
LENS #3111
CLEAR



MX GOGGLES **3101 FL KID** Atzaki **MADE IN ITALY**

LENS: DUAL LAYER MIRRORED



#3101-310 FL Yellow fluo matt
LENS #3148 - DUAL LAYER - MIRRORED - RED



This is the 3101 PROGRIP kids goggle: the new ergonomically design follow the little guys face form with maximum comfortability.
With single density foam, one silicone treated strap, anti UV and 1 millimeters dual layer mirrored, NO-FOG lens.

Single density foam with hydro repellent velvet.



WEARABLE
ALSO WITH
EYEGASSES

Features

- ANTI SCRATCH
- ANTI U.V.
- NO FOG



3 silicone treated strap



Packaging

#3101-153 FL

Orange fluo matt

LENS #3146
DUAL LAYER - MIRRORED - BLUE



#3101-312 FL

Blue fluo matt

LENS #3147
DUAL LAYER - MIRRORED - YELLOW



REPLACEMENT LENSES - For KID GOGGLES

FITS KIDS GOGGLE SERIES N° 3101 KID - 3101 FL KID

Art.3199
LIGHT SENSITIVE.



Art.3146 DUAL LAYER
MIRRORED BLUE.



Art.3147 DUAL LAYER
MIRRORED YELLOW.



Art.3148 DUAL LAYER
MIRRORED RED.



Art.3111
CLEAR.



Art.3121
DARK.



Art.3171
Tear offs 10 pcs per bag.



MX GOGGLES 3101 CH KID

LENS: CLEAR - DOUBLE SIDE



#3101-101 CH White
LENS #3113 CH - CLEAR - DOUBLE SIDE



This is the 3101 PROGRIP kids goggle: the new ergonomically design follow the little guys face form with maximum comfortability. With double density foam, triple silicone treated strap, anti UV and 1 millimeters dual layer mirrored, NO ANTIFOG

Double density foam with hydro repellent velvet.



- Features
- ANTI SCRATCH
 - ANTI U.V.
 - NO FOG
 - COLORED VELVET



3 silicone treated strap



LENS #3113 CH
CLEAR - DOUBLE SIDE

#3101-102 CH
Black
LENS #3113
CLEAR - DOUBLE SIDE



#3101-107 CH
Red
LENS #3113
CLEAR - DOUBLE SIDE



ROLL OFF

EXTRA LARGE

For all models

XXL ROLL OFF

EXTRA LARGE

For Vista - Vision

MX GOGGLES: ANTI STICK LENS art. 3215

AVAILABLE WITH ALL TR COLORS

NEW

#3200 RO

Goggle 3200 +
Roll off 3268

LENS #3215
ANTI-STICK



#3201 RO

Goggle 3201 +
Roll off 3268

LENS #3215
ANTI-STICK



XL roll-off system with 4 cm = 1.6 inches film high. Possibility to mount roll-off and tear-off at the same time. - Quick and easy TEAR OFFS system. Ranked number one frame and 1 millimeter thickness lens system in the Industry. Progrip patent no-fog lenses combined with Anti-stick lenses. Sizes: It fits all Progrip goggles

MX GOGGLES: ANTI STICK LENS art. 3315

AVAILABLE WITH VISTA - VISION COLORS

#3300 RO

Goggle 3303 +
Roll off 3368

LENS #3315
ANTI-STICK



#3303 RO

Goggle 3303 +
Roll off 3368

LENS #3315
ANTI-STICK

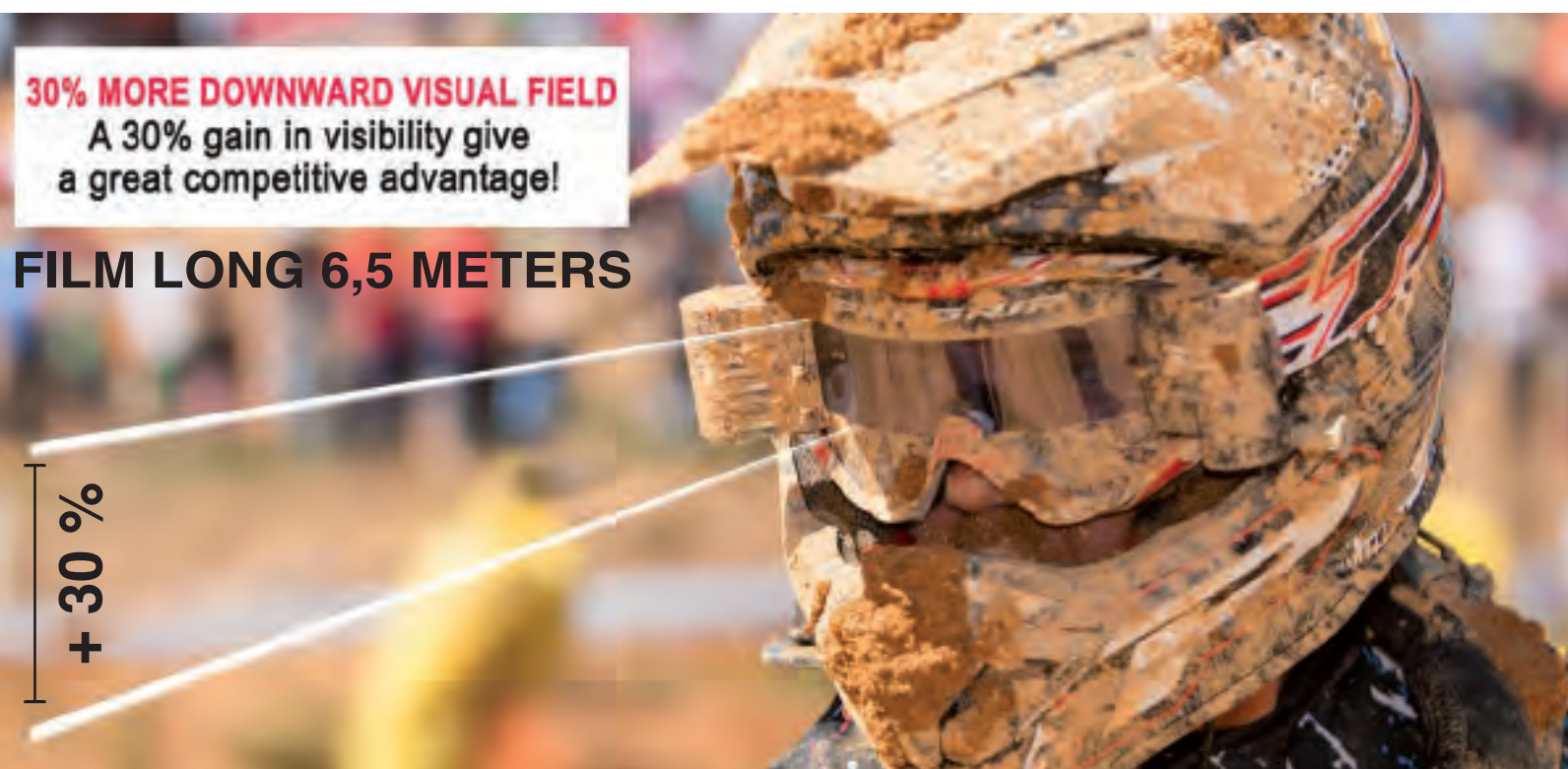


New XXL roll-off system with 5 cm = 1.97 inches film high. Possibility to mount roll-off and tear-off at the same time. - Quick and easy TEAR OFFS system. Ranked number one frame and 1 millimeter thickness lens system in the Industry. Progrip patent no-fog lenses combined with Anti-stick lenses. Sizes: It fits only for VISTA - VISION

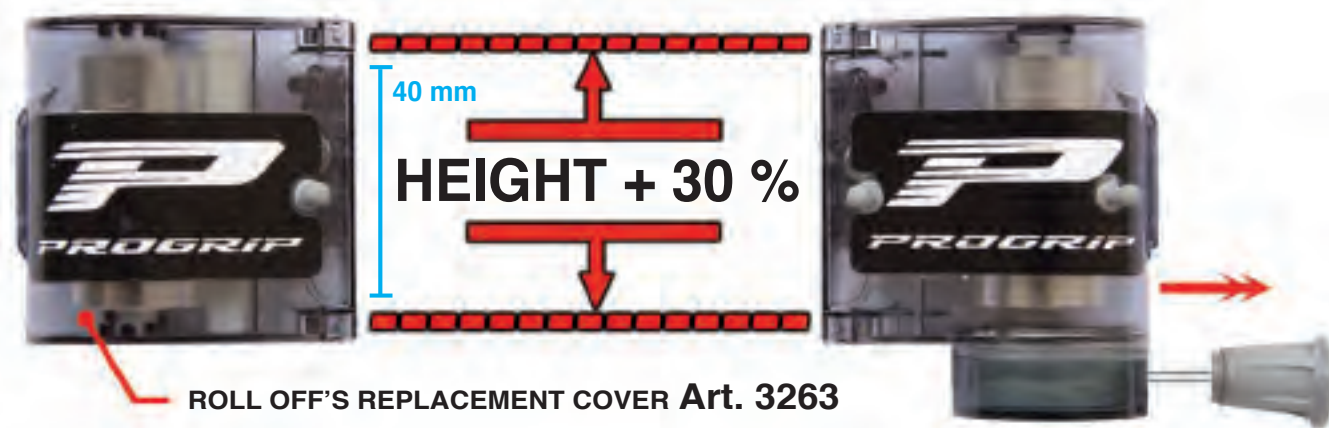
ROLL OFF SYSTEM

for ALL MODELS

art. 3268 XL ROLL OFF SYSTEM MOUNTED WITH ANTI STICK LENS, art. 3215



Art. 3268 XL ROLL OFF SYSTEM



Art. 3264
Bag of 4 pieces
sweat absorber



Art. 3267
Bag of 3 pieces
Mud flap



Art. 3269
Blister of 12 pieces
replacement films



Art. 3268
Packaging Roll Off



Art. 3263
Roll Off
Replacement
cover

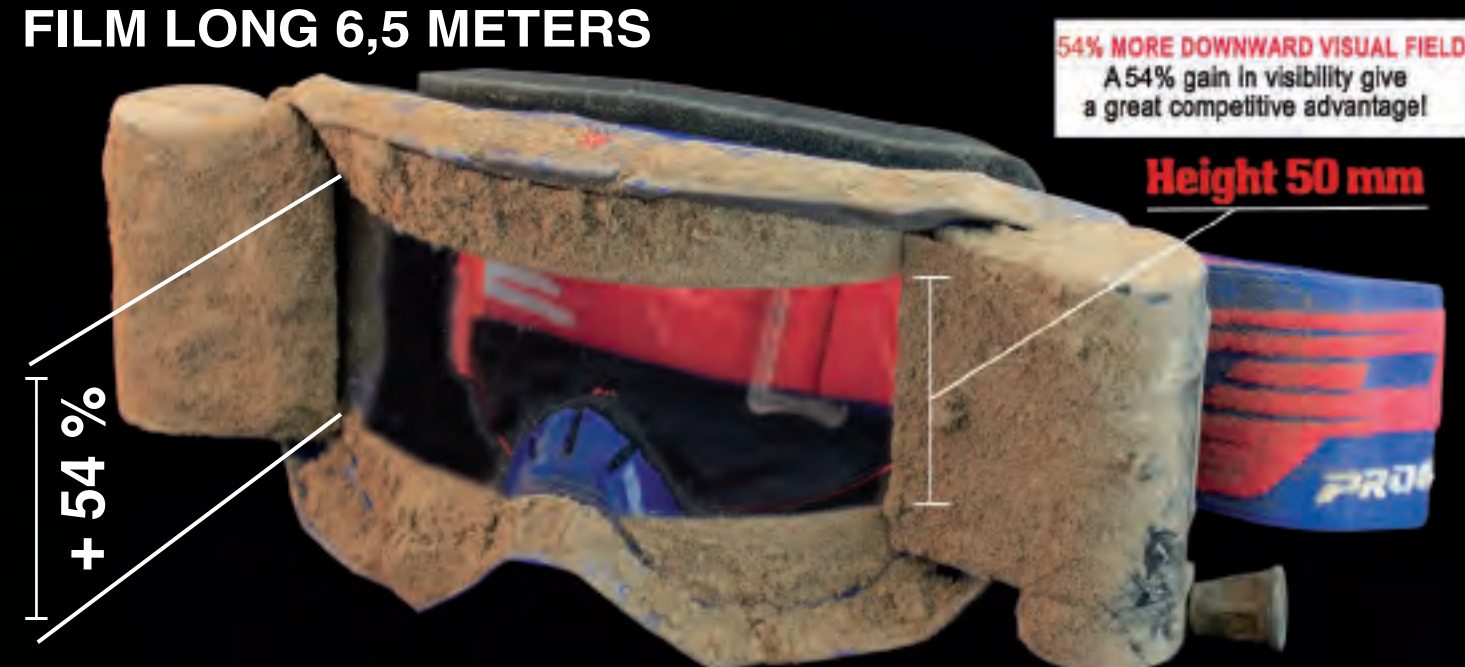
FOR ALL MODELS EXCEPT VISTA/VISION/MAGNET/ADVANCE GOGGLES
Art.3303/3300/3205/3206

ROLL OFF SYSTEM

for VISTA - VISION - MAGNET - ADVANCE

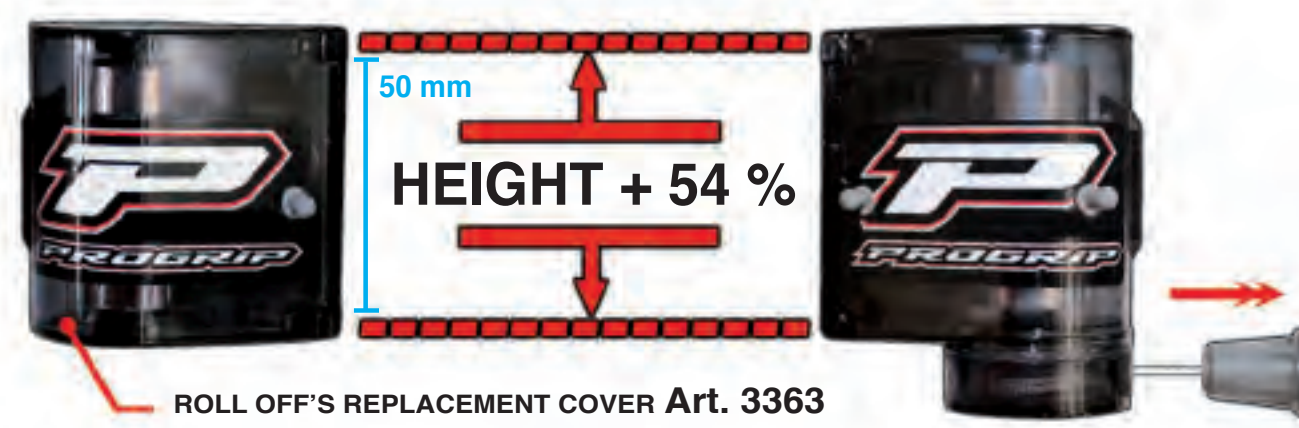
art. 3368 XXL ROLL OFF SYSTEM MOUNTED WITH ANTI STICK LENS, art. 3315

FILM LONG 6,5 METERS



USED BY ROMAIN FEBVRE ON INTERNAZIONALI D'ITALIA - RIOLA SARDO 2018

Art. 3368 XXL ROLL OFF SYSTEM



Art. 3367
Bag of 3 pieces
Mud flap



Art. 3369
Blister of 8 pieces
replacement films



Art. 3368
Packaging Roll Off



Art. 3363
Roll Off
Replacement
cover

ONLY FOR VISTA/VISION/MAGNET/ADVANCE GOGGLES
Art.3303/3300/3205/3206

- Art. 3290** For all models Progrid goggles
- Art. 3390** Only for VISTA/VISION goggles
- Art. 3299** Only for MAGNET goggles
- Art. 3291** Replacement wire for any brand models

One bag of 10 tear off lenses
3270 or 3370 or 3278



One wire with pins

One clear lens anti-fog 3210 or 3310



One clip for fixing the wire



PATENTED IN
EUROPE - USA - ASIA - AUSTRALIA

PATENT N° 102020000002458

FOR ARAI HELMETS

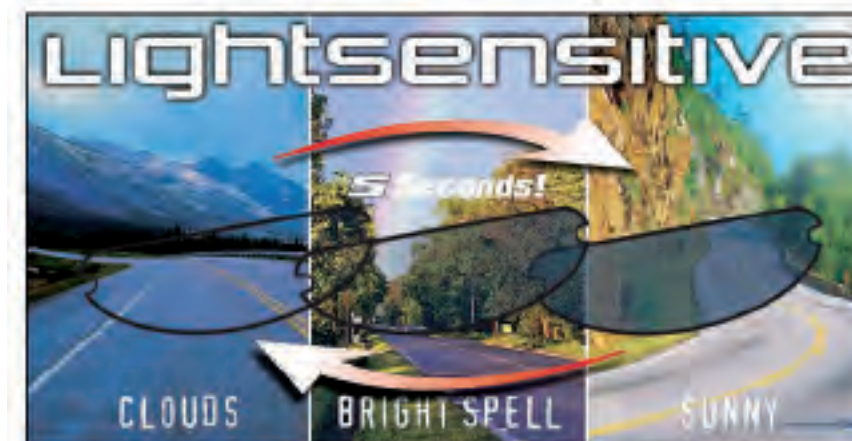


Clear

FOR ANY HELMETS



Clear



ART.3000 INTEGRAL LIGHT SENSITIVE LENS

Road 3000
lens for Arai
helmets



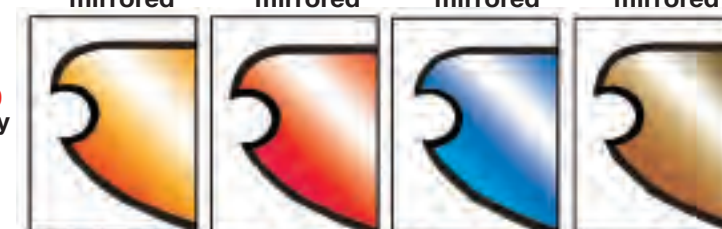
Rainbow
mirrored

Red
mirrored

Blue
mirrored

Bronze
mirrored

Road 3000
lens for any
helmets



NO FOG

LIGHT SENSITIVE



REPLACEMENT LENSES

MADE IN ITALY

FITS ADULT GOGGLE SERIES N°: 3200 - 3201 - 3204 - 3301 - 3450

Art.3270 STANDARD
Tear offs 10 pcs per bag.



Art.3271 STANDARD
Tear offs 25 pcs per bag.



Art.3276 LAMINATED
Tear offs 7 pcs per bag.
MUD FLAP Art.3275 INCLUDED



Art.3210 CLEAR
One side ANTI-FOG.



Art.3211 LIGHT BLUE
One side ANTI-FOG.



Art.3276 C0
Tear offs 7 pcs per bag.
with glue



Art.3213 CLEAR
Double side ANTI-SCRATCH.



Art.3215 ROLL OFF'S
Special ANTI-STICK ANTI-FOG.



Art.3225 SMOKED ROLL OFF'S
Special ANTI-STICK ANTI-FOG.



Art.3221 YELLOW
ANTI-FOG.



Art.3222 ORANGE
ANTI-FOG.



Art.3220 SMOKED
ANTI-FOG.



Art.3244 POLARIZED
ANTI-FOG.



Art.3255 DOUBLE RED
LIGHT SENSITIVE ANTI-FOG.



Art.3235 DOUBLE LS
LIGHT SENSITIVE ANTI-FOG.



Art.3257 DOUBLE ORANGE
ANTI-FOG.



Art.3297 RAINBOW
ANTI-FOG.



Art.3256 DOUBLE YELLOW
ANTI-FOG.



FITS ADULT GOGGLE SERIES N°: 3200 - 3201 - 3204 - 3301 - 3450

Art.3298 DUO LAYERED LS
LIGHT SENSITIVE ANTI-FOG.



Art.3295 SPHERIC
Mirrored ANTI-FOG.



Art.3265 DOUBLE
For Roll Off's ANTI-FOG.



Art.3212 CLEAR
Double side ANTI-FOG.



Art.3247 MULTILAYERED
Mirrored YELLOW - ANTI-FOG.



Art.3248 MULTILAYERED
Mirrored RED - ANTI-FOG.



Art.3249 MULTILAYERED
Mirrored ORANGE - ANTI-FOG.



Art.3251 MULTILAYERED
Mirrored GREEN - ANTI-FOG.



Art.3252 MULTILAYERED
Mirrored SILVER - ANTI-FOG.



Art.3253 MULTILAYERED
Mirrored LIGHT BLUE - ANTI-FOG.



Art.3275 MUD FLAP
For TEAR OFF'S



Art.3246 MULTILAYERED
Mirrored BLUE - ANTI-FOG.



REPLACEMENT LENSES - For VISTA and VISION

FITS ADULT GOGGLE SERIES N° 3303 - 3300

Art.3310 CLEAR



Art.3346 MULTILAYERED
Blue



Art.3347 MULTILAYERED
Yellow



Art.3348 MULTILAYERED
Red



Art.3352 MULTILAYERED
Mirrored SILVER



Art.3315 ROLL OFF



Art.3370 STANDARD
Tear offs 10 pcs per bag.



Art.3371 STANDARD
Tear offs 25 pcs per bag.



Art.3376 C0
Tear offs 7 pcs per bag.
with glue



Art.3398 DUO LAYERED LS
LIGHT SENSITIVE ANTI-FOG.



Art.3325
SMOKED ROLL OFF



Art.3320 SMOKED



Art.3335 DOUBLE
For Roll Off's ANTI-FOG.





HELMETS

3150

HELMET

BANDIT

FIBREGLASS SHELL

Replacements

Page 100

#3150-348

Black/Yellow fluo MATT

Sizes from

XS to XXL

Weight

1195 Gr.

Homologation

E13.22R00.22R05.10103.01



3150

HELMET

BANDIT

FIBREGLASS SHELL

Replacements

Page 100

#3150-264

Electric blue/Yellow fluo

Sizes from

XS to XXL

Weight

1195 Gr.

Homologation

E13.22R00.22R05.10103.01



3150

HELMET

BANDIT

FIBREGLASS SHELL

Replacements

Page 100

#3150-127
White/Red

Sizes from

XS to XXL

Weight

1195 Gr.

Homologation

E13.22R00.22R05.10103.01



3150

HELMET

BANDIT

FIBREGLASS SHELL

Replacements

Page 100

#3150-207
Light blue/Black

Sizes from

XS to XXL

Weight

1195 Gr.

Homologation

E13.22R00.22R05.10103.01



3180

HELMET



SPECIAL DURABLE ABS High impact shell

NEW



Replacements

Page 101

#3180-362

Blue/Petrol

Sizes from

XS to XL

Weight

1295 Gr.

Homologation

E1*22R05/2*300668*00



3180

HELMET



MIMETIC LINING INSIDE

The use of extremely technologic fabrics and materials is what makes the production of ProGrip inner linings special. The fabrics are accurately selected so that they can guarantee a very high humidity absorption, resist for a long time and maintain the same comfort through the time. ProGrip fabrics are all made with a special antibacterial and anti-allergic treatment.



VENTILATION

ProGrip ventilation systems directs cooling, drying air into the helmet, and use areas of low air pressure to the rear of the helmet to draw warm, damp air through the exhaust outlets and into the outside environment. The perfect placement and shaping of the inlets and outlets, along with air channels created within the liner, are the basis for optimum ventilation.



EMERGENCY CHEEK PAD REMOVAL SYSTEM

Allows easier access to an injured rider. By pulling the orange tabs integrated in the pads, the cheek pads slide out. Making helmet removal easier for trained medical personnel and rescuers and minimising the risk of additional injury.



3180

HELMET



SPECIAL DURABLE ABS High impact shell

NEW



Replacements

Page 101

#3180-361

Blue/Yellow fluo

Sizes from

XS to XL

Weight

1295 Gr.

Homologation

E1*22R05/2*300668*00



3180

HELMET



SPECIAL DURABLE ABS High impact shell

NEW



Replacements

Page 101

#3180-130

Red/White

Sizes from

XS to XL

Weight

1295 Gr.

Homologation

E1*22R05/2*300668*00



3180

HELMET



SPECIAL DURABLE ABS High impact shell

NEW



Replacements
Page 101

#3180-363
Green/Fuxia

Sizes from
XS to XL

Weight
1295 Gr.

Homologation
E1*22R05/2*300668*00



3180

HELMET



SPECIAL DURABLE ABS High impact shell

NEW



Replacements
Page 101

#3180-322
Black matt

Sizes from
XS to XL

Weight
1295 Gr.

Homologation
E1*22R05/2*300668*00



3009

HELMET

FOR KID



SPECIAL DURABLE ABS High impact shell

NEW



Replacements

Page 100

#3009-365

Green/Light blue Tiffany

Sizes from

S - M - L

Weight

1195 Gr.

Homologation

E1.05300443



FOR KID

3009

HELMET

FOR KID



SPECIAL DURABLE ABS High impact shell

NEW



Replacements

Page 100

#3009-364

Orange Fluo/Light blue

Sizes from

S - M - L

Weight

1195 Gr.

Homologation

E1.05300443



FOR KID

3150

HELMET

REPLACEMENTS



#3152-207 Peack



#3152-127 Peack



#3152-348 Peack



#3152-264 Peack



#3153 Screws



#3154

Inside lining and pad

Sizes PEACK

XS - M
L - XXL

3180

HELMET

REPLACEMENTS

NEW



#3181-130

PEACK - Red/White



#3181-362

PEACK - Blue/Petrol



#3181-361

PEACK - Blue/Yellow fluo



#3181-363

PEACK - Green/Fuxia



#3181-322

PEACK - Black matt



#3183 Screws



#3182

Inside lining and pad
MIMETIC

3009

YOUTH HELMET

REPLACEMENTS

NEW



#3010-364

PEACK
Orange Fluo/
Light blue



#3010-365

PEACK
Green/
Light blue Tiffany



#3012 Screws



#3011

Inside lining and pad
MIMETIC





RACE GEAR

PROFESSIONAL RACE GEAR

NEW

7015-372 Red/Blue/White



6015-372 Red/Blue/White



7015-370 Dark grey/Green/Yellow



6015-370 Dark grey/Green/Yellow



7015-371 Dark grey/Orange fluo/Blue



6015-371 Dark grey/Orange fluo/Blue



7015-369 Grey/Blue/White



6015-369 Grey/Blue/White



7015-226 White/Red/Blue



6015-226 White/Red/Blue



6015

Adult Pants

NEW

#6015-372

Race gear
RED/BLUE/WHITE



PRINTED POLYESTER AND CORDURA

PERFECT FITTING



#6013

Replacement
leather pad.
2 PCS

YOU NO LONGER HAVE TO THROW AWAY YOUR
MX PANTS, WHEN THE KNEE PROTECTION IS
BROKEN. WHEN YOU BUY PROGRIP MX PANTS,
THE KNEE PROTECTION CAN BE REPLACED,
SAVING YOU MONEY.

Pants: sizes from

28 to 38



#6015-226

WHITE/RED/BLUE

#6015-371

DARK GREY/ORANGE FLUO/BLUE

#6015-370

DARK GREY/GREEN/YELLOW

#6015-369

GREY/BLUE/WHITE

Cross/enduro pants for adult made in printed polyester and Cordura fabric for long durability. Elastic strap on the sides for a better fitting. Elastic in strategic positions for a perfect comfort. Patented removable leather pads. 100% Made in Italy

7015

Adult Jersey

NEW

#7015-372

Race gear
RED/BLUE/WHITE



PRINTED ELASTIC WRIST BAND

V - COLLAR

Jersey: sizes from

S to XXXL



#7015-226

WHITE/RED/BLUE

#7015-371

DARK GREY/ORANGE FLUO/BLUE

#7015-370

DARK GREY/GREEN/YELLOW

#7015-369

GREY/BLUE/WHITE

MX and enduro jersey for adult made with high quality printed polyester with microholes for a perfect transpiration and comfort of riding. V-collar and printed elastic wrist bands are perfect to complete this great jersey.

7017

Adult Jersey **SLIM**

NEW

7009/6009

Kids

NEW

MADE IN ITALY

#7017-372

Race gear
RED/BLUE/WHITE



NEW MATERIAL ELASIC SLIM

#7017-369

Race gear
GREY/BLUE/WHITE



Jersey: sizes from
S to XXXL

KIDS RACE GEAR WILL BE AVAILABLE ON DEMAND WITH MINIMUM QUANTITY

V - COLLAR

PRINTED ELASTIC WRIST BAND

Jersey: sizes from
S to XL



#7009-372

Race gear
RED/BLUE/WHITE



#7009-371

Race gear
DARK GREY/ORANGE FLUO/BLUE



#7009-369

Race gear
GREY/BLUE/WHITE



#6009-372

Race gear
RED/BLUE/WHITE



#6009-371

Race gear
DARK GREY/ORANGE FLUO/BLUE



#6009-369

Race gear
GREY/BLUE/WHITE

MX and enduro jersey and pants for KID made with high quality printed polyester with microholes for a perfect transpiration and comfort of riding. V-collar and printed elastic wrist bands are perfect to complete this great jersey.

Pants: sizes from
24 to 36

FOR KID

7010/7009

Jersey

WHILE STOCKS LAST



#7010-342
LUGHT BLUE/BLACK/GREY



#7010-339
BLUE NAVY/LIGHT BLUE/RED



#7010-340
BLACK/YELLOW FLUO/ ELECTRIC BLUE



#7010-345
RED/WHITE/BLUE



#7010-343
YELLOW FLUO/BLACK/GREY



#7009-340
BLACK/YELLOW FLUO/ ELECTRIC BLUE
KID



#7009-346
WHITE/ORANGE/BLACK
KID



#7009-343
YELLOW FLUO/BLACK/GREY
KID

6010/6009

Pants

WHILE STOCKS LAST



#6010-342
LUGHT BLUE/BLACK/GREY



#6010-339
BLUE NAVY/LIGHT BLUE/RED



#6010-340
BLACK/YELLOW FLUO/ ELECTRIC BLUE



#6010-345
RED/WHITE/BLUE



#6010-343
YELLOW FLUO/BLACK/GREY



#6009-340
BLACK/YELLOW FLUO/ ELECTRIC BLUE
KID



#6009-346
WHITE/ORANGE/BLACK
KID



#6009-343
YELLOW FLUO/BLACK/GREY
KID



GLOVES

4010

MX GLOVES

Airtech

EXTRA COMFORT

EXTRA GRIPPING

Sizes from
S to XXL



#4010-343
Yellow fluo/Black/Grey



Developed by pro racers for the most tough Off-Road conditions, the new PROGRIP 4010 Glove has additional padding in the palm and on the outside of the thumb, in the areas where you need that “something extra” to guarantee comfort during prolonged and extreme use. All areas of high use are reinforced with evident protective stitching and panels while, for a better fit, the back of the glove and the back of the fingers have cushioned Lycra inserts where the soft rubberPROGRIP logo is attached.

#4010-187
Grey/Black



#4010-341
Yellow fluo/Electric blue/Red



#4010-342
Light blue/Black/Grey



#4010-344
Red/Black/Blue



4014

MX GLOVES

Extra light

Sizes from
S to XXL

EXTRA COMFORT

PALM ULTRA LIGHT

#4014-339

Blue navy/Light blue/Red



The great fit and protected feeling of this new glove are defined by the padded elastic panel in the upper side.
The extra light thickness of the palm area, allows a great control of the handlebar.

#4014-340

Black/Yellow fluo/Electric blue



#4014-345

Red/White/Blue



#4014-187

Grey/Black



4005

MX GLOVES

Neoprene

EXTRA COMFORT

WATER PROOF

Sizes from
S to XXL

#4005-164

Yellow fluo



Developed by pro racers for the most tough Off-Road conditions, the new PROGRIP Neoprene gloves for winter time. High quality Superflex material. Additional padding in the palm and on the outside of the thumb.

#4005-102

Black



4009

MX GLOVES

Airtech FOR KID

Sizes from
XXXS to S

EXTRA COMFORT

PALM ULTRA LIGHT

#4009-343

Yellow fluo/Black/Grey



#4009-341

Yellow fluo/Electric blue/Red



#4009-346

White/Orange/Black



Developed by pro racers for the most tough Off-Road conditions, the new PROGRIP 4010 Glove has additional padding in the palm and on the outside of the thumb, in the areas where you need that "something extra" to guarantee comfort during prolonged and extreme use. All areas of high use are reinforced with evident protective stitching and panels while, for a better fit, the back of the glove and the back of the fingers have cushioned Lycra inserts where the soft rubber PROGRIP logo is attached.

SSERA

4004

MX GLOVES

Neoprene

Sizes from
XXXS to S

EXTRA COMFORT

WATER PROOF

#4004-164

Yellow fluo



#4004-102

Black



Neoprene gloves for winter time. High quality Superflex material. Additional padding in the palm and on the outside of the thumb.

FOR KID

FOR KID

4011

SUMMER SCOOTER

Sizes from

S to XXL

EXTRA COMFORT

PERFECT FIT

Tough pigskin back side
vented for maximum comfort
Padded syntetic leather palm
reinforced.



#4011

Black/Grey



4016

ROAD RACING LONG

Sizes from

S to XL

EXTRA COMFORT

PERFECT FIT

Hard shell carbon fiber, kepro-
tec Genuine, drum dyed cowhi-
de leater shell with soft bem-
berg lining Reinforced palm,
Padded knuckles Adjustable
cuff with velcro strap.



#4016

Black/White

4012

SUPERMOTARD

ONLY SIZE: S

TOTAL PROTECTION

CARBON KEPROTECT

The CARBON KEPROTECT inserts add
to this a-typical look but underline
the high PROTECTION quality of these
newly designed gloves. These semi-ri-
gid inserts are placed on the knuckles
and the joints to provide that extra
protections for the areas of the hand
that are most at risk.



#4012

Titanium



4018

MOTARD SHORT

Sizes from

S to XL

EXTRA COMFORT

PERFECT FIT

Hard shell carbon fiber, kepro-
tec Genuine, drum dyed cowhi-
de leater shell with soft bem-
berg lining Reinforced palm,
Padded knuckles Adjustable
cuff with velcro strap.



#4018

Black/White

4013

MECHANIC

Sizes from

S to XXL

55% SYNTETHIC

43% NYLON STRECH

43% NYLON BAND

EXTRA GRIPPING
RUBBER PAD



#4013

Black



4017

WINTER

Water Proof

Sizes from

S to XL

55% SYNTETHIC

4% POLIESTER

2% PVC

EXTRA THICK
LINING INSIDE



#4017

Black/Grey



PROTECTIONS

5991

ADULT KNEE GUARD

HARD POLYPROPYLENE WITH ERGONOMIC FOAM



#5991

Available only in black
ONE SIZE FITS ALL



Knee guard made of special hard polypropylene compound with ergonomic foam protection inside.
Great wearability for great variety of movements.

5996

ADULT ELBOW GUARD

HARD POLYPROPYLENE WITH ERGONOMIC FOAM



#5996

Available only in black
ONE SIZE FITS ALL



Elbow guard made of special hard polypropylene compound with ergonomic foam protection inside.
Great wearability for great variety of movements.

5996

YOUTH KNEE GUARD

HARD POLYPROPYLENE WITH ERGONOMIC FOAM



#5996

Available only in black
ONE SIZE FITS ALL



Knee guard made of special hard polypropylene compound with ergonomic foam protection inside.
Great wearability for great variety of movements.

FOR KID

5600

CROSS HANDGUARD UNIVERSAL FITTING



5610

ENDURO/MOTARD HANDGUARD UNIVERSAL FITTING



5630

CROSS HANDGUARD UNIVERSAL FITTING



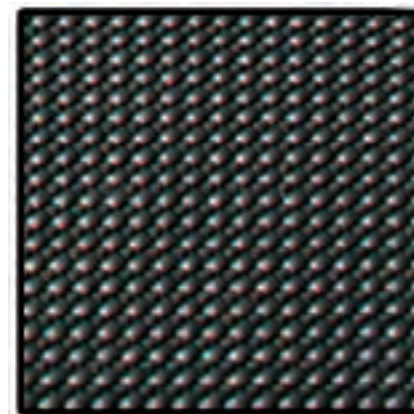


ACCESSORIES

5011

SEAT COVER

FOR OFF ROAD SEATS



STANDARD



SUPER GRIP

#5011

Universal size

TEXTURE SURFACE

DIAMOND SURFACE



5012

FRONT FORK PROTECTION

REAL CARBON FIBRE

#5012

LONG: 230 mm



5020

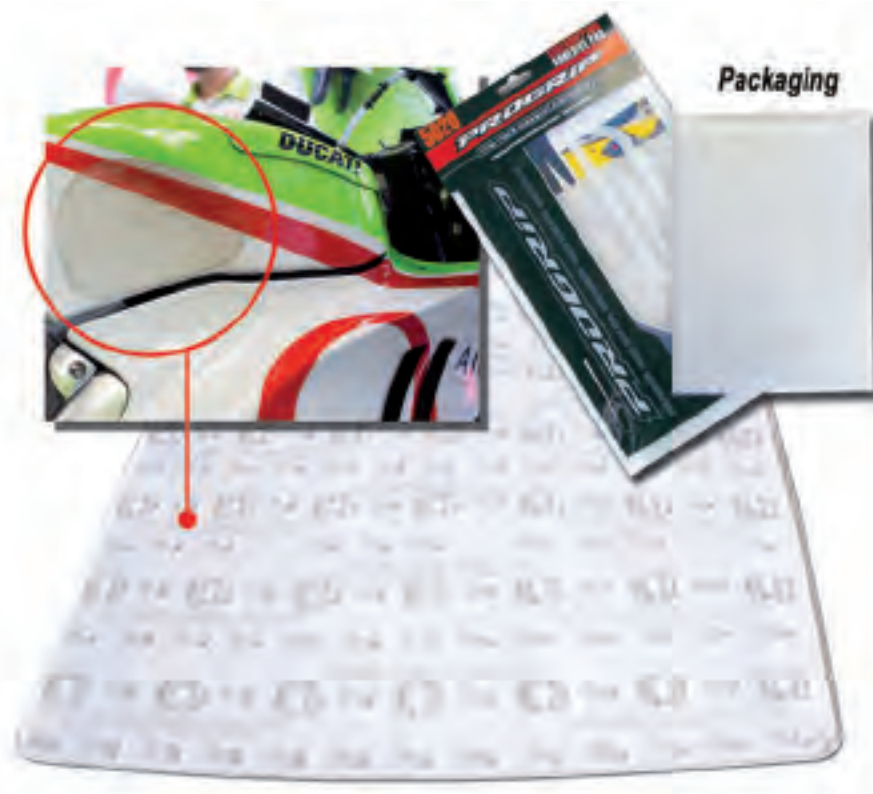
SIDE GRIPPING ADHESIVE PAD

CUT AREAS YOU NEED FOR YOUR BEST PERSONAL GRIPPING

#5020

3 PIECES

SIZE: 210 mm X 160 mm



5040

DISK BRAKE AND SPROCKET PROTECTION

#5040

SIZE:

FRONT 270 mm - REAR 240 mm

REAR

FRONT



5002

ANTI BLISTER FLANGE



#5002

LYCRA + FOAM



EXAMPLE OF MOUNTING

Packaging.

2550/2560

SILENCER PLUGS

#2560

4 STROKES



#2550

2 STROKES



KIT:
6x 2560
5x 2550
1x 2550 FREE

2500/2510

FORK BOOTS

#2500

Size: \varnothing mm 34/37 - 40/45
AVAILABLE COLORS



#2510

Size: \varnothing mm 42/45 - 60/65
AVAILABLE COLORS



5003

GRIPS PROTECTOR



#5003

Available only in BLACK



Packaging.

480

BRAKE LEVER GRIPS



Packaging.

#480

Size: \varnothing mm 10 - Long mm 75

AVAILABLE COLORS



5030

GAS CAP COVER



Packaging.



#5030

CARBON RESINED

Available for:
YAMAHA - KAWASAKI
SUZUKI - HONDA

5000/5005/5008

RESINED TANK PROTECTOR



5007

RESINED DUO TANK PROTECTOR

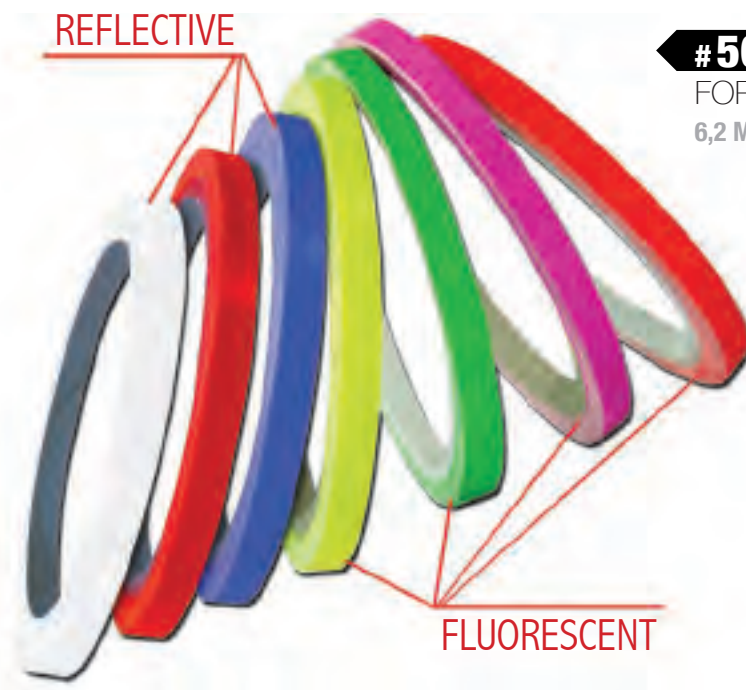


5025

ADHESIVE STRIP



EXAMPLE OF MOUNTING



REFLECTIVE

FLUORESCENT

#5025

FOR ROAD WHEELS
6,2 METERS PER ROLLS



Packaging.

9510

HELMET BAG

FOR ONE HELMET



#9510

HELMET BAG



5026

ADHESIVE STRIP



ROAD



OFF ROAD

EXAMPLE OF MOUNTING

#5026

FOR ROAD AND OFF ROAD
WHEELS

AVAILABLE COLORS
FLUO COLORS



FLUO COLORS



STANDARD COLORS

12 PIECES FOR TWO WHEELS ON BOTH SIDE



Packaging.

9520

GRIPS AND GOGGLES BAG

#9520

GRIPS AND
GOGGLES BAG



9410

ENDURO PACK

Mid-size pack that carries all your essential and more. One main compartment with velcro closure, second large compartment big enough for goggles or gloves, plus zippered pouch flap and two side pockets. Made of heavy-duty ballistic nylon.

AVAILABLE IN ONE COLOR: BLACK

TOOLS ARE NOT INCLUDED



#9410

9500

GEAR BAG

#9500

A special "U" shaped zipper for easy access. Made with heavy-duty rip-stop nylon and strong nylon zippers.

AVAILABLE IN ONE COLOR: BLACK / RED



DISPLAY

Carton display kit of 14 goggles and 10 grips



#9991

Metal display kit of 20 goggles and 72 grips



#9990

Aluminium display
SUNGASSES ARE NOT INCLUDED



#9995



JAGO GEERTS **MX2** 2021 - 2° Place



SNOW WORLD

3460 SNOW GOGGLES

MIRRORED

MADE IN ITALY

SNOW GOGGLES Double lens
Multilayered Mirrored OUTSIDE - Light Sensitive INSIDE
Double density foam with hydro repellent and colored velvet.

BUY WITH
E-COMMERCE
ON LINE:
www.progrip.com

#3460-124

Turquoise
LENS #3461 -DOUBLE - MIRRORED RED



#3460-166

Orange fluo
LENS #3461
DOUBLE - MULTILAYERED RED



#3460-165

Red fluo
LENS #3462
DOUBLE - MULTILAYERED BLUE



#3460-188

Green fluo
LENS #3462
DOUBLE - MULTILAYERED BLUE



#3460-164

Yellow fluo
LENS #3463
DOUBLE - MULTILAYERED GREEN



Homologation

CE-EN-N° AC-96025 REV. 3

Features

- ANTI SCRATCH
- ANTI U.V.
- NO FOG
- COLORED VELVET



WEARABLE
ALSO WITH
EYEGLASSES



3 silicone treated strap

3455 SNOW GOGGLES

LIGHT SENSITIVE **MADE IN ITALY**

SNOW GOGGLES Double lens LIGHT SENSITIVE

15 mm EXTRA LARGE FOAM

Double density foam with hydro repellent and colored velvet.

BUY WITH
E-COMMERCE
ON LINE:
www.progrip.com

#3455-264

Electric blue/Yellow fluo
LENS #3235 - DOUBLE - LIGHT SENSITIVE



#3455-327

Light blue/White



#3455-288

Grey/Red



Homologation
CE-EN-N° AC-96025 REV. 3

Features
- ANTI SCRATCH
- ANTI U.V.
- NO FOG
- COLORED VELVET
- LIGHT SENSITIVE



3 silicone treated strap



WEARABLE
ALSO WITH
EYEGLASSES

BUY WITH
E-COMMERCE
ON LINE:
www.progrip.com

#3455-388

Blue/Red



#3455-309

Yellow fluo/
Blue navy



#3455-137

White/Black



#3455-275

Orange fluo/Blue



SNOW REPLACEMENT LENS

MADE IN ITALY

FITS ADULT GOGGLE SERIES N° 3200 - 3450 - 3455 - 3460



Art.3461
MULTILAYERED RED
Double lens - Light sensitive



Art.3462
MULTILAYERED BLUE
Double lens - Light sensitive



Art.3463
MULTILAYERED GREEN
Double lens - Light sensitive



Art.3261
Double lens - clear LS



Art.3242
Double lens - mirrored silver



Art.3244
Double lens - polarized



Art.3280
Double lens - blue mirrored



Art.3256
Double lens - yellow



Art.3255
Double lens - red



Art.3257
Double lens - blue



Art.3260
Double lens - orange



Art.3295
Spheric - mirrored



Art.3297
Rainbow



Art.3252
MULTILAYERED SILVER

SPORTSWEAR

MADE IN ITALY



Art.7502

BLUE NAVY
Man

Backside

Sizes from
S to XXL

Art.7502

WHITE NAVY
Man

Backside

Sizes from
S to XXL



Art.7500

BLACK
Man

Backside

Sizes from
S to XXL

Art.7500

WHITE
Man

Backside

Sizes from
S to XXL

SPORTSWEAR SOCKS



Art.9997

LONG

Sizes

S/M - L/XL

COTTON - POLYESTER - LYCRA

Art.9996

SHORT



WATER PROOF

RAIN JACKET

TRANSPARENT



Adult sizes from
M to XXL

Youth sizes from
S to XL

Art.7802 ADULT

Art. 7801 YOUTH

Water proof



Art.7800 ADULT

JACKET + PANTS

Water proof

Sizes from

S to XXL

REFLECTIVE LOGOS



Art.9012

Classic vest

Sizes from

XS to XXL



Backside

Resined with water repellent technology, three pockets outside with zip, one pocket inside - Quilt padding - large embroidery logo on back.

SPORTSWEAR

T-SHIRT



Sizes from
S to XXL

Art.7510
Purple

Art.7510
Cyan

Art.7510
Yellow

Art.7510
Green

SPORTSWEAR

SHIRT

Art.7504
Black



Sizes from
S to XXL



Art.7504
White

SPORTSWEAR

CAP



Art.9999 Hat
100% Cotton



Art.9998 Cap
100% Polyester



Art.9600 Cap
100% Acrilic



Art.9601 Cap
100% Cotton

BEFORE AND AFTER

RACE PROFESSIONAL CREAM

| **Art.8001**

PRE-RACE HEATING CREAM EXTREME WARM-UP HEATING EFFECT CREAM

PRE-RACE HEATING CREAM has been formulated to combine the beneficial action of massage with the revitalizing properties of capsaicin which, in addition to acting on the relaxation of muscles and joints, improves local blood circulation. This cream immediately creates a feeling of warmth that, just a few minutes from application tends to increase. In synergy with capsaicin the warming cream contains camphor that helps the mechanical action of the massage to firm and tone the body. This feature can last up to 40 minutes from application. The warming cream contains ingredients that help athletes before and after competitions to improve or restore muscle tone and is therefore very suitable for those who practice a lot of sport, especially in the coldest periods of the year.



| **Art.8002**

FAST PAIN RELIEF SPORT ICE GEL

SPORT ICE GEL has been studied to give immediate relief to parts of the body caused by greater fatigue and heaviness. Its formulation is based on the combination of Menthol Polar Bear which performs a decongestant action, in synergy with the Mentil Lactate, an ingredient that allows you to keep the feeling of freshness and lightness longer on the skin, giving immediately energy and tone. It is particularly indicated on hot days, after sport and for all those activities that require standing up for many hours of the day.



| **Art.8003**

DECONGESTANT GEL RELIEVES TIRED BODY PARTS AFTER INTENSE ACTIVITY

DECONGESTANT GEL is a gel studied to give relief to the tired parts of the body, heavy and aching after sporting activities, restoring tone and vigor to the skin and muscles. The high content of red vine (30%), naturally rich in flavonoids, improves microcirculation providing greater oxygenation and nutrients to adjacent tissues. In addition to carrying out the specific function of regenerating and decongesting tissues, it is rich in vegetable glycerine, a polyfunctional substance with important moistening and moisturizing properties. The formulation contains Menthol Polar Bear that thanks to its multiple properties performs the function of refreshing and decongesting affected parts, simulating a slight analgesic effect.



| **Art.8004**

RELIEVES TRAUMA PAIN, SPRAINS, MUSCLE CONTRACTURES ARNICA GEL 30%

THE ARNICA GEL 30% thanks to the high percentage of Arnica tincture (30%), the gel is able to perform an analgesic and decongestant action on the affected part, as well as giving an immediate sensation of enjoyable freshness that helps improve its function. The properties of Arnica make it to all effects a very effective natural anti-inflammatory. Applied to the skin it relieves pain and swelling associated with bruises, sprains, muscle and joint pain. It can be very helpful in reducing pain and promoting tissue healing.



| **Art.8005**

POST WORKOUT RECOVERY GEL FAST BODY ENERGY REGAIN

POST WORKOUT RECOVERY GEL is a special gel containing 30% Echinacea extract that enriches the skin with nutrients and greatly improves its appearance. Its formulation contains a complex of Escina and Centella, always known for their vasoprotective properties that helps eliminate muscle heaviness. The complex of Escina and Centella has been studied in synergy with Cyclodextrin which acts as a vehicle increasing its function. Menthol in crystals completes the effectiveness of the product giving an immediate feeling of freshness and alleviating the perception of heaviness.



PROGRIP

3055 HELMET

FREERIDE DOWNHILL JX-1

Sizes

S/M - L/XL



#3055-153

Orange fluo matt



#3055-310

Yellow fluo matt



#3055-191

Titanium



Bug net



Adjustable size fitting

PROFESSIONAL

RACE GEAR

MADE IN ITALY

Freeride MTB jersey for adult made with high quality printed polyester with microholes for a perfect transpiration and comfort of riding. V-collar and printed elastic wrist bands are perfect to complete this great jersey.

#7011-143

GREY/WHITE

SHORT



Jersey: sizes from

S to XXXL

#7016-143

GREY/WHITE

SHORT KIDS



SIZE KID

Jersey: sizes from

S to XL

#7012-143

GREY/WHITE

LONG

#7014-143

GREY/WHITE

LONG KIDS

#6011E -143

GREY/WHITE

ELASTIC



Pants: sizes from

26 to 38

#6016E -143

GREY/WHITE

ELASTIC KIDS



SIZE KID

Pants: sizes from

24 to 36

#6011-143

GREY/WHITE

CORDURA

#6016-143

GREY/WHITE

CORDURA KIDS

#6012E -143

GREY/WHITE

ELASTIC



Pants: sizes from

26 to 38

#6014E -143

GREY/WHITE

ELASTIC KIDS



SIZE KID

Pants: sizes from

24 to 36

#6012-143

GREY/WHITE

CORDURA

#6014-143

GREY/WHITE

CORDURA KIDS



ROMAIN FEBVRE

Photo: SABRINA SCARPELLINI

SUNGLASSES

OPTICAL QUALITY - ANTI U.V. - MULTILAYERED LENS

E-COMMERCE ON LINE:
www.progrip.com

#3605-

Transparent
MULTILAYERED BLUE LENS



#3605-

Transparent
MULTILAYERED ORANGE LENS



#3605-331

Black matt/Yellow fluo
MIRRORED SILVER LENS



#3605-332

Black matt/Green fluo
MULTILAYERED GREEN LENS



#3605-333

Black matt/Wood
MIRRORED GOLD LENS



#3604-322

UNISEX
Black matt
MULTILAYERED GREEN LENS



#3607-334

WOMAN
Turtle look
MIRRORED GOLD LENS



SUNGLASSES

OPTICAL QUALITY - ANTI U.V. - MULTILAYERED LENS

E-COMMERCE ON LINE:
www.progrip.com

#3605-322

Black matt
SILVER MIRRORED LENS



#3605-328

Blue matt
MULTILAYERED BLUE LENS



#3605-264

BICOLOR Blue/Yellow fluo
MULTILAYERED BLUE LENS LENS



#3605-126

BICOLOR Black/White
SILVER MIRRORED LENS LENS



#3605-329

TRANSPARENT White/Blue
MULTILAYERED BLUE LENS LENS



#3605-330

TRANSPARENT White/Red
MULTILAYERED RED LENS



#3605-266

Fuxia/Cyan
VIOLET MIRRORED MULTILAYERED LENS



#3605-130

Red/White
BLUE MIRRORED MULTILAYERED LENS



SUNGLASSES

OPTICAL QUALITY - ANTI U.V. - MULTILAYERED LENS

E-COMMERCE ON LINE:
www.progrip.com

MADE IN ITALY

#3607-258 Woman

Camo Pink
SILVER MIRRORED LENS



#3606-101

White
BLUE MIRRORED LENS



#3606-164

Yellow fluo
BLUE MIRRORED LENS



#3606-102

Black
SMOKED LENS



CLEANING CLOTH



BICYCLE GRIPS

BABY GRIPS

No Phtalates

MADE IN ITALY

#445

Size: Ø mm 22 - Long. mm 75

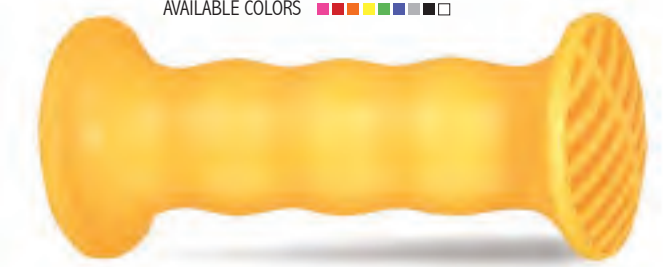
AVAILABLE COLORS



#453

Size: Ø mm 19 - 22 - Long. mm 100

AVAILABLE COLORS



#446

Size: Ø mm 14 - 16 - Long. mm 90

AVAILABLE COLORS



#454

Size: Ø mm 19 - Long. mm 100

AVAILABLE COLORS



COMFOR ISO 8098 - DIN 79100/2

#450

Size: Ø mm 22 - Long. mm 88

AVAILABLE COLORS



COMFOR ISO 8098 - DIN 79100/2

#455

Size: Ø mm 16 - 18 - Long. mm 75

AVAILABLE COLORS



#452

Size: Ø mm 22 - Long. mm 88

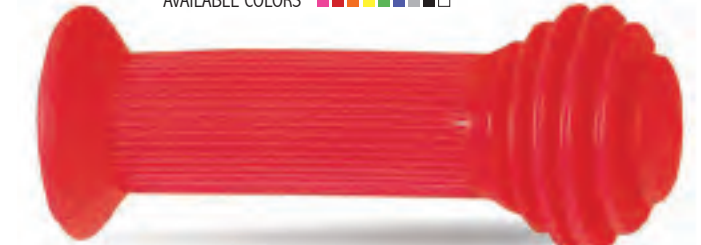
AVAILABLE COLORS



#486

Size: Ø mm 18 - 19 - Long. mm 100
mm 22 without flange

AVAILABLE COLORS



COMFOR ISO 8098 - DIN 79100/2

BABY GRIPS

No Phtalates

MADE IN ITALY

#475

Size: Ø mm 10 - 12 - 14 - 16 - Long. mm 88

AVAILABLE COLORS



#501

Size: Ø mm 19 - 22 - Long. mm 100

AVAILABLE COLORS



COMFOR ISO 8098 - DIN 79100/2

#487

Size: Ø mm 22 - Long. mm 105

AVAILABLE COLORS



COMFOR ISO 8098 - DIN 79100/2

#480

Size: Ø mm 8 - 10 - 12 - Long. mm 78

AVAILABLE COLORS



#502

Size: Ø mm 19 - 22 - Long. mm 90

AVAILABLE COLORS



COMFOR ISO 8098 - DIN 79100/2

EXAMPLE OF COLOR COMBINATION



BICYCLE GRIPS

Single Density

MADE IN ITALY

#499

Size: Ø mm 22 - 23,5 - Long. mm 110



#615

Size: Ø mm 20 - 22 - 23,5 - Long. mm 100



#506

Size: Ø mm 22 - Long. mm 110



#616

Size: Ø mm 22 - Long. mm 100



#508

Size: Ø mm 19 - 22 - 23,5 - Long. mm 110



#510

Size: Ø mm 18 - 22 - 23,5 - Long. mm 105



#531

Size: Ø mm 22 - Long. mm 95



#659

Size: Ø mm 18 - 22 - Long. mm 105



#660

Size: Ø mm 22 - 23,5 - Long. mm 110



Hardness

MEDIUM SH 35 total

BABY PEDALS

No Phtalates

MADE IN ITALY

#1700

Size: Ø mm 8 - Long. mm 65

AVAILABLE COLORS: Black - White



#1800

Size: Ø mm 10 - Long. mm 65

AVAILABLE COLORS: Black - White



#1950

Size: Ø mm 8 - Long. mm 70

AVAILABLE COLORS: Black - White



BICYCLE GRIPS

Single Density

MADE IN ITALY

#540

Size: Ø mm 22 22 - 22 25 - Long. mm 120



ALSO FOR MOPED

#539

Size: Ø mm 19 - 22 - Long. mm 100



#666

Size: Ø mm 20 - 22 - 23,5 - Long. mm 110



#668

Size: Ø mm 22 - 23,5 - Long. mm 110



VINTAGE GRIPS

Old Fashion

MADE IN ITALY

#670

Size: Ø mm 22 - Long. mm 96



AVAILABLE COLORS



#675

Size: Ø mm 22 - Long. mm 98



AVAILABLE COLORS



#680

Size: Ø mm 22 - 23,5 - Long. mm 102



AVAILABLE COLORS



#480

Size: Ø mm 8 - 10 - Long. mm 75



EXAMPLE OF MOUNTING

#830

Size: Ø mm 9 - Long. mm 85



AVAILABLE COLOR



BMX GRIPS

MADE IN ITALY

#930

Size: Ø mm 22 22 - Long. mm 122

AVAILABLE COLORS



DOUBLE DENSITY

#760

Size: Ø mm 22 22 - Long. mm 125

AVAILABLE COLORS



#937

Size: Ø mm 22 22 - Long. mm 122

AVAILABLE COLORS



SINGLE DENSITY



#728-356 Blue ring
Size: Ø mm 22 22 - Long. mm 122
ANODIZED ALUMINIUM



#712

Size: Ø mm 19 19 - 22 22 - Long. mm 125

AVAILABLE COLORS



#720

Size: Ø mm 22 22 - 24 24 Long. mm 125

AVAILABLE COLORS



#935

Size: Ø mm 22 22 - Long. mm 145

AVAILABLE COLORS



#748 Short
Size: Ø mm 22 - Long. mm 82



#747 Long
Size: Ø mm 22 - Long. mm 122



#738
Size: Ø mm 22 - Long. mm 115



#772
Size: Ø mm 22 - Long. mm 130



#745
Size: Ø mm 22 - Long. mm 122



#751
Size: Ø mm 19 - 22 - Long. mm 115



#537 Short
Size: Ø mm 22 - Long. mm 85



#746
Size: Ø mm 22 - Long. mm 122



#538 Long
Size: Ø mm 22 - Long. mm 120



ECOBX
Packaging quantity:
48 x Box

#770
Size: Ø mm 22 - Long. mm 122



#777
Size: Ø mm 22 - Long. mm 130



#771
Size: Ø mm 22 - Long. mm 135



#787 Black foam
Size: Ø mm 22 - Long. mm 130



#773
Size: Ø mm 22 - Long. mm 115



#785 Black foam
Size: Ø mm 22 - Long. mm 130



#947 Long
Size: Ø mm 22 - Long. mm 125
AVAILABLE COLORS ■ ■ ■ ■ ■ ■ ■



#784 Black foam
Size: Ø mm 22 - Long. mm 130



CUT HERE IF NEEDED



#920
Size: Ø mm 19 - 22 - Long. mm 80 - 120 - 160



#838 SA

Size: Ø mm 22 - Long. mm 122

AVAILABLE COLORS



DOUBLE DENSITY

#837 SA

Size: Ø mm 22 - Long. mm 122

AVAILABLE COLORS



SINGLE DENSITY

#964 evo

Long

Size: Ø mm 22 - Long. mm 120

AVAILABLE COLORS



DOUBLE DENSITY

#963 evo

Short

Size: Ø mm 22 - Long. mm 80

AVAILABLE COLORS



DOUBLE DENSITY

#927

Long

Size: Ø mm 22 - Long. mm 122

AVAILABLE COLORS



DOUBLE DENSITY

#926

Short

Size: Ø mm 22 - Long. mm 85

AVAILABLE COLORS



DOUBLE DENSITY

#796 SA

Size: Ø mm 22 - Long. mm 125

AVAILABLE COLORS



DOUBLE DENSITY

#808

Size: Ø mm 22 - Long. mm 120

AVAILABLE COLORS



DOUBLE DENSITY

#999-319

LOCK ON

Size: Ø mm 22 22 - Long. mm 120

ANODIZED ALUMINIUM



#807

Size: Ø mm 22 - Long. mm 125



DOUBLE DENSITY

#997

LOCK ON

Size: Ø mm 22 - Long. mm 130



DOUBLE DENSITY

#946

Short

Size: Ø mm 22 - Long. mm 100

AVAILABLE COLORS



DOUBLE DENSITY

#995-357

Red ring

Size: Ø mm 22 Long. mm 130



#939-357

Red ring

Size: Ø mm 22 22 - Long. mm 120

ANODIZED ALUMINIUM



#952

Short

Size: Ø mm 22 - Long. mm 85

AVAILABLE COLORS



DOUBLE DENSITY

#953

Long

Size: Ø mm 22 - Long. mm 122

AVAILABLE COLORS



DOUBLE DENSITY

SINGLE COLOR

#928

Size: Ø mm 22 - Long. mm 80



#929

Size: Ø mm 22 - Long. mm 122



#805

Size: Ø mm 22 - Long. mm 80



#806

Size: Ø mm 22 - Long. mm 120



#835

Size: Ø mm 22 - Long. mm 83



#836

Size: Ø mm 22 - Long. mm 122



#943

Size: Ø mm 22 - Long. mm 95



#944

Size: Ø mm 22 - Long. mm 122



SINGLE COLOR

#948

Size: Ø mm 22 - Long. mm 100



#949

Size: Ø mm 22 - Long. mm 125



#951

Size: Ø mm 22 - Long. mm 75



#954

Size: Ø mm 22 - Long. mm 122



#982

Size: Ø mm 22 - Long. mm 85



#983

Size: Ø mm 22 - Long. mm 122



#933

Size: Ø mm 22 - Long. mm 125



ECOBX
Packaging quantity:
48 x Box

SINGLE COLOR

#957

Size: Ø mm 22 - Long. mm 65



#977

Size: Ø mm 22 - Long. mm 50



#958

Size: Ø mm 22 - Long. mm 88



#962

Size: Ø mm 22 - Long. mm 65



#959

Size: Ø mm 22 - Long. mm 120



#967

Size: Ø mm 22 - Long. mm 85



#973

Size: Ø mm 22 - Long. mm 100



#976

Size: Ø mm 22 - Long. mm 125



ECOBX
Packaging quantity:
48 x Box

#989

Size: Ø mm 22 - Long. mm 120



#988

Size: Ø mm 22 - Long. mm 85



#969

Size: Ø mm 22 - Long. mm 120



#968

Size: Ø mm 22 - Long. mm 85



#932

Size: Ø mm 22 - Long. mm 125



#931

Size: Ø mm 22 - Long. mm 85



#942

Size: Ø mm 22 - Long. mm 120



#941

Size: Ø mm 22 - Long. mm 95



942



BRAND LOGO ON DEMAND
Special models produced on design
for O.E.M. on exclusive basis, are not
shown on this catalog

#932

Fluorescent
Size: Ø mm 22 - Long. mm 125



INDUSTRY

Handgrips

MADE IN ITALY

#520

Size: Ø mm 10 16 18 20 - Long. mm 100



#704

Size: Ø mm 22 22 - 22 25 - Long. mm 120



#720

Size: Ø mm 22 22 - 22 25 - Long. mm 125



#756

Size: Ø mm 22 22 - 22 25 - Long. mm 105



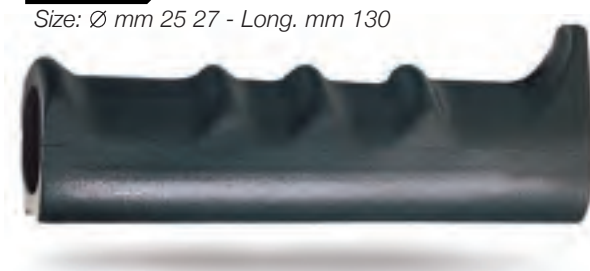
#650

Size: Ø mm 22 - Long. mm 120



#1015

Size: Ø mm 25 27 - Long. mm 130



#870 FOAM TUBE

Available sizes:
Art 870
INSIDE OUTSIDE
Ø 20 mm Ø 27 mm
Ø 22 mm Ø 29 mm
Ø 20 mm Ø 30 mm



#1785



#1870



#2010

Size: Ø mm 22 25



#1786



#1875



#2015



INDUSTRY

Handgrips

MADE IN ITALY

#1000

Size: Ø mm 25 27 28 - Long. mm 120



#1010

Size: Ø mm 30 31 32 - Long. mm 120



#1002

Size: Ø mm 25 - Long. mm 115



#1012

Size: Ø mm 32 - Long. mm 120



#1020

Size: Ø mm 22 25 27 - Long. mm 160

SPORT GRIPS

Horn

MADE IN ITALY

#778

Ø mm 22 22
Ø mm 22 19
Long mm 345



#779

Ø mm 22 19
Long mm 330



#887

Ø mm 22 22
Ø mm 22 19
Ø mm 19 19
Long mm 275



#888

Ø mm 22 22
Ø mm 22 19
Long mm 300



#889

Ø mm 19 19
Long mm 325







ROMAIN FEBVRE **MXGP** 2021 - 2° Place

PROGRIP



**SUL PRESENTE CATALOGO
NON SONO INSERITI
GLI ARTICOLI PRODOTTI
DIETRO ESCLUSIVA
RICHIESTA DEL CLIENTE**

**CUSTOM DESIGNED
PRODUCTS ARE NOT
INCLUDED IN THIS
CATALOG. QUOTATIONS
FOR CUSTOM DESIGNED
PRODUCTS ARE AVAILABLE
UPON REQUEST**



P
PROGRIP

www.progrip.com